

# Appendix 6.1

## Lake Stage and Inputs Summary Balance Periods 1-50

There are 50 balance periods, each with a number (usually three) four day sub-balances.

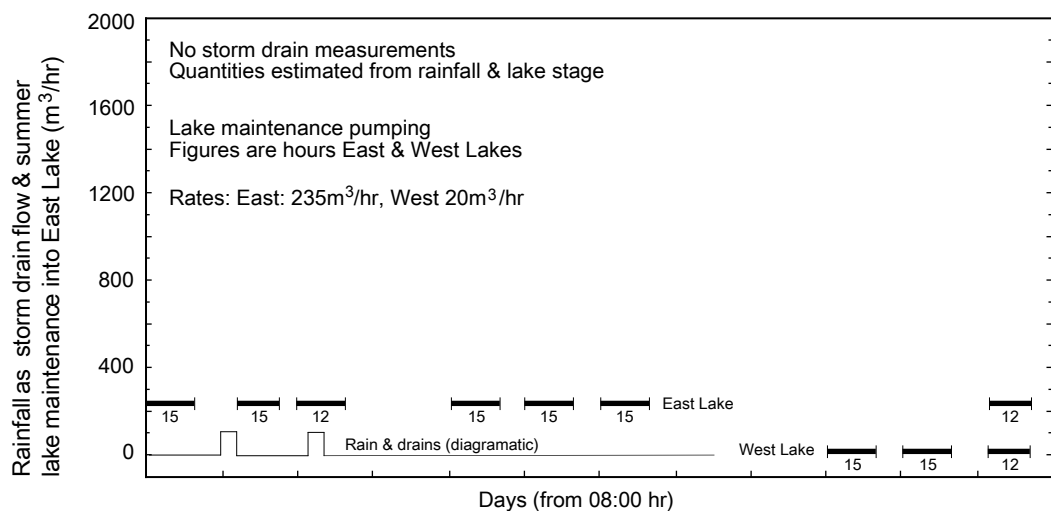
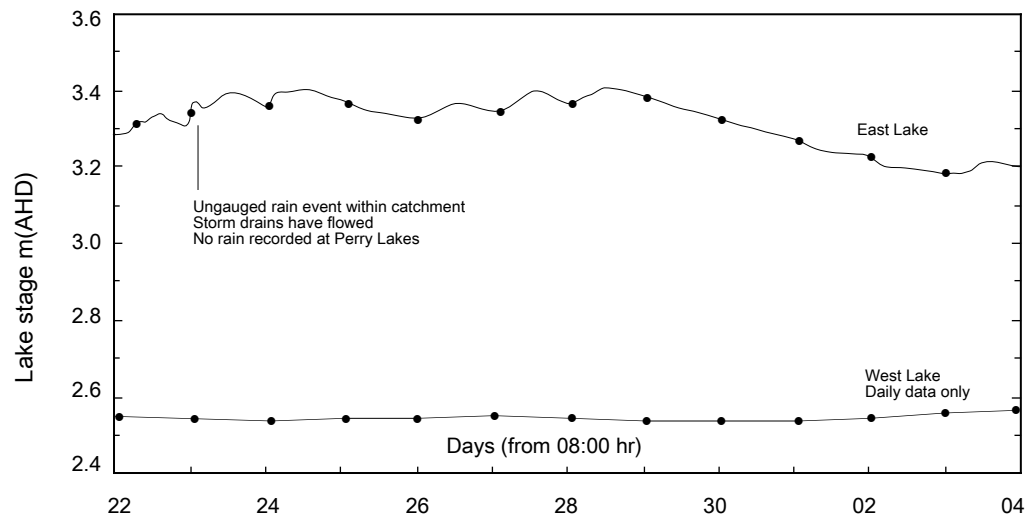
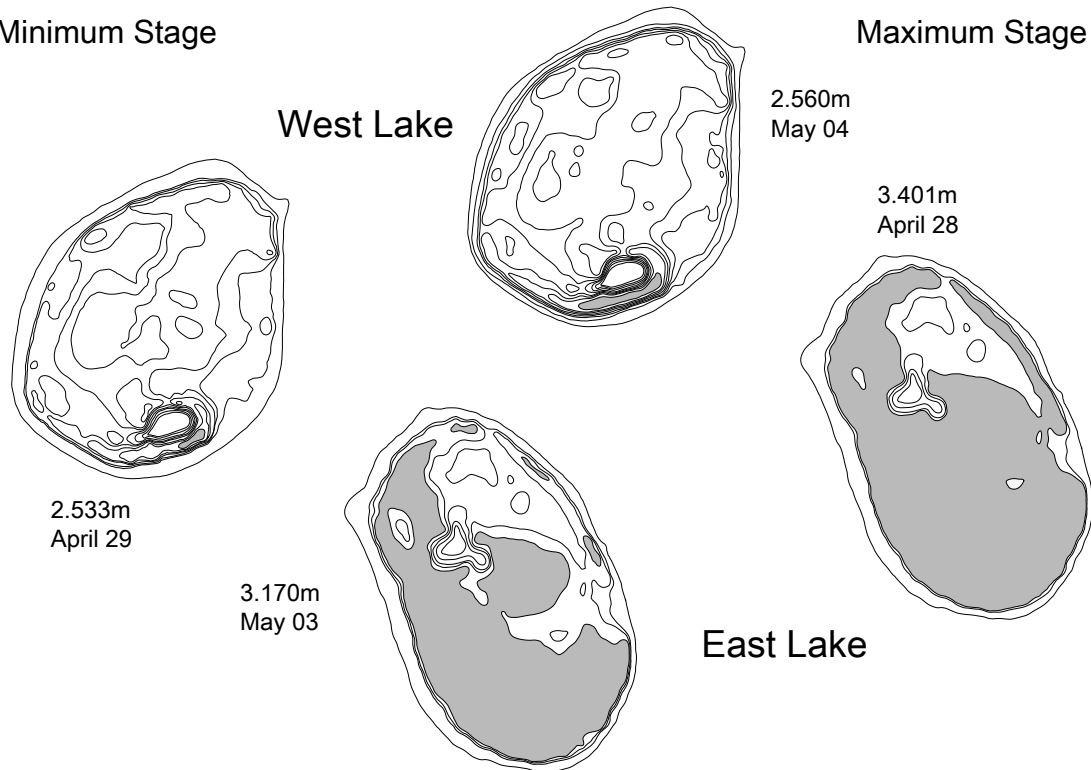
Balance	Start	End	Days	Balance	Start	End	Days
1996							
1	April 22	May 04	12	26	March 04	March 16	12
2	May 04	May 16	12	27	March 16	March 28	12
3	May 16	May 28	12	28	March 28	April 09	12
4	May 28	June 09	12	29	April 09	April 21	12
5	June 09	June 25	16	30	April 21	May 03	12
6	June 25	July 07	12	31	May 03	May 15	12
7	July 07	July 19	12	32	May 15	May 27	12
8	July 19	August 08	20	33	May 27	June 16	20
9	August 08	August 20	12	34	June 16	June 28	12
10	August 20	September 01	12	35	June 28	July 10	12
11	September 01	September 13	12	36	July 10	July 22	12
12	September 13	September 25	12	37	July 22	August 03	12
13	September 25	October 07	12	38	August 03	August 19	16
14	October 07	October 19	12	39	August 19	August 31	12
15	October 19	October 31	12	40	August 31	September 12	12
16	October 31	November 12	12	41	September 12	September 24	12
17	November 12	November 24	12	42	September 24	October 06	12
18	November 24	December 10	16	43	October 06	October 18	12
19	December 10	December 22	12	44	October 18	October 30	12
1997				45	October 30	November 11	12
20	December 22	January 03	12	46	November 11	November 23	12
21	January 03	January 15	12	47	November 23	December 05	12
22	January 15	January 27	12	48	December 05	December 17	12
23	January 27	February 08	12	49	December 17	December 25	8
24	February 08	February 20	12	1998			
25	February 20	March 04	12	50	December 25	January 03	9

There is one sheet for each balance period. Thumbnail maps of East and West Lake show date and height of minimum and maximum lake stage and the water cover in each basin over the balance period. The maps are miniatures of Figures 3.10 a&b. Dual graphs plot lake stage (as daily manual staff gauge readings indicated by bullets and the trace from electronic lake level loggers), relative rainfall (as indicated by aggregate storm drain flow volumes) and lake maintenance pumping. The pumping is shown as bar graphs with pumping time in hours.

These summary sheets provide an over view of lake hydrology to complement and to be examined in conjunction with the balance sheets (Appendices 6.2 and 6.3).

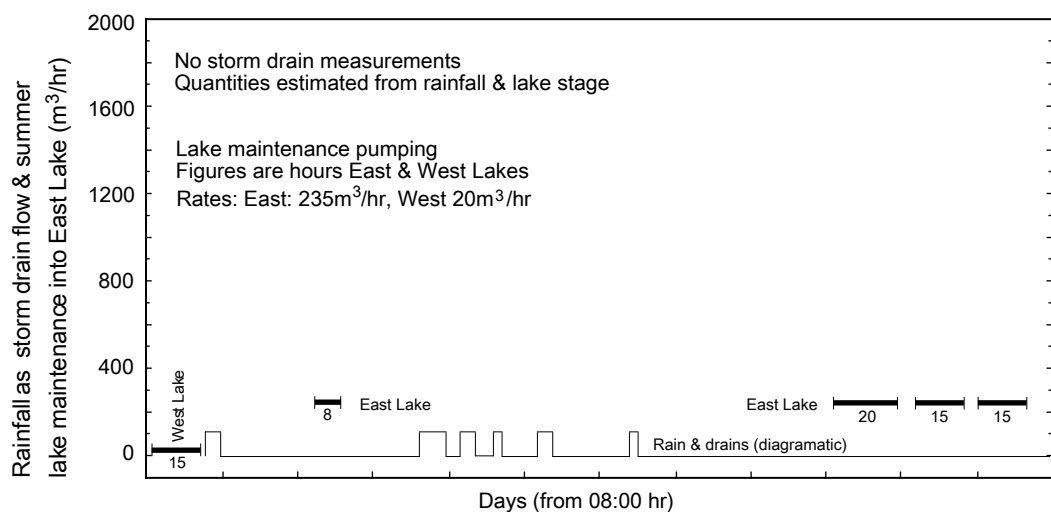
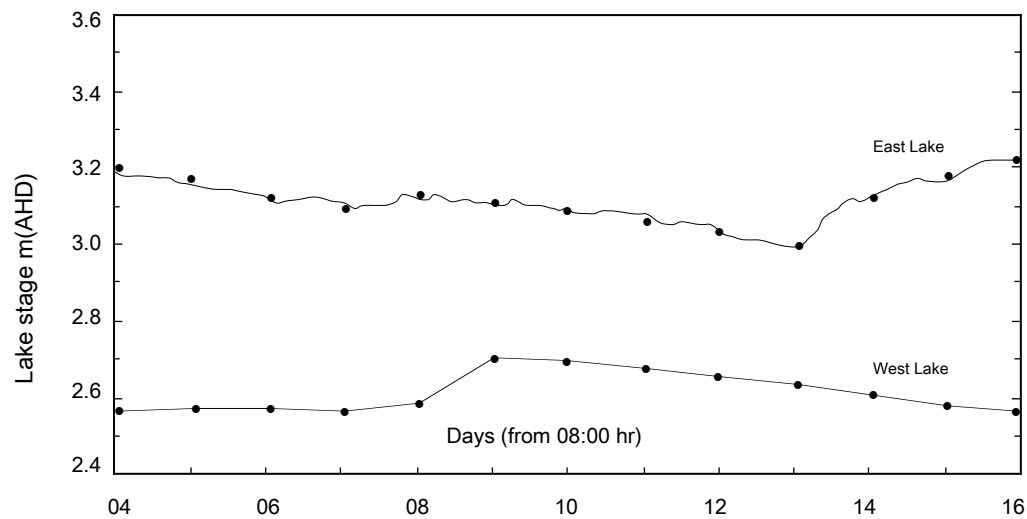
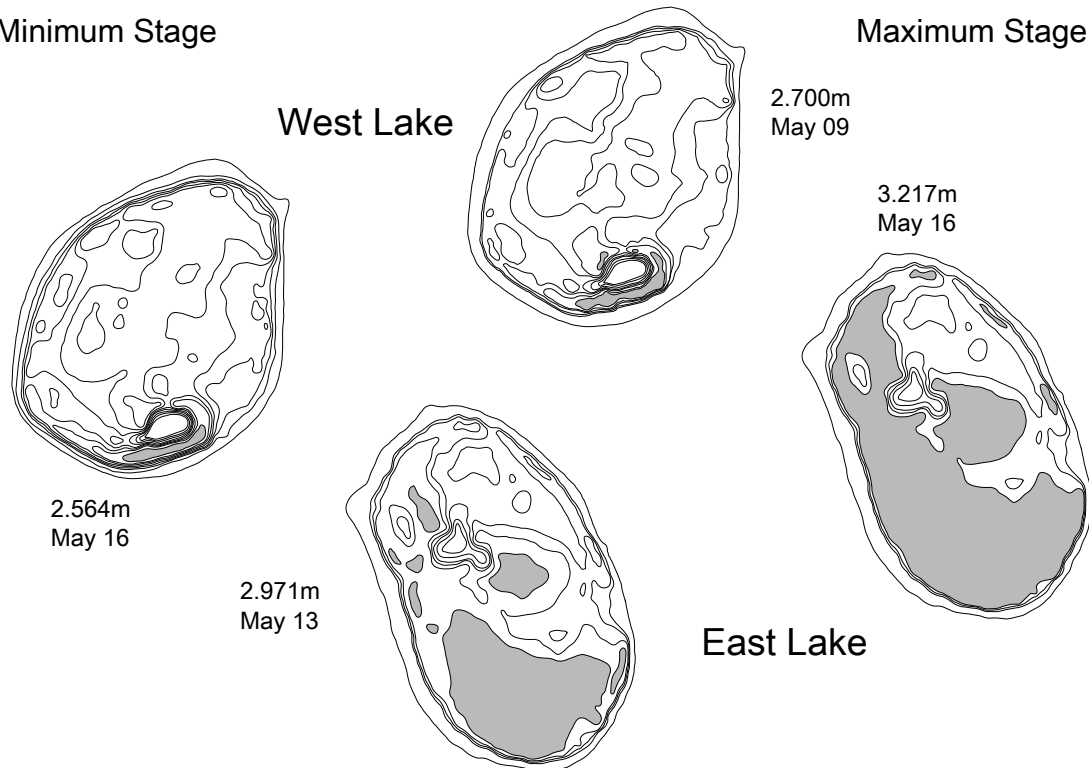
## Minimum Stage

## Maximum Stage



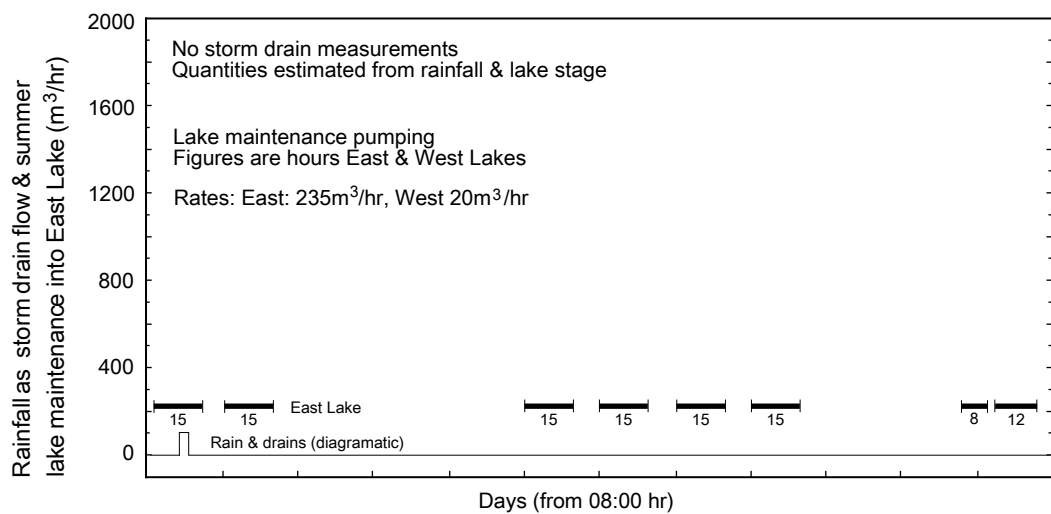
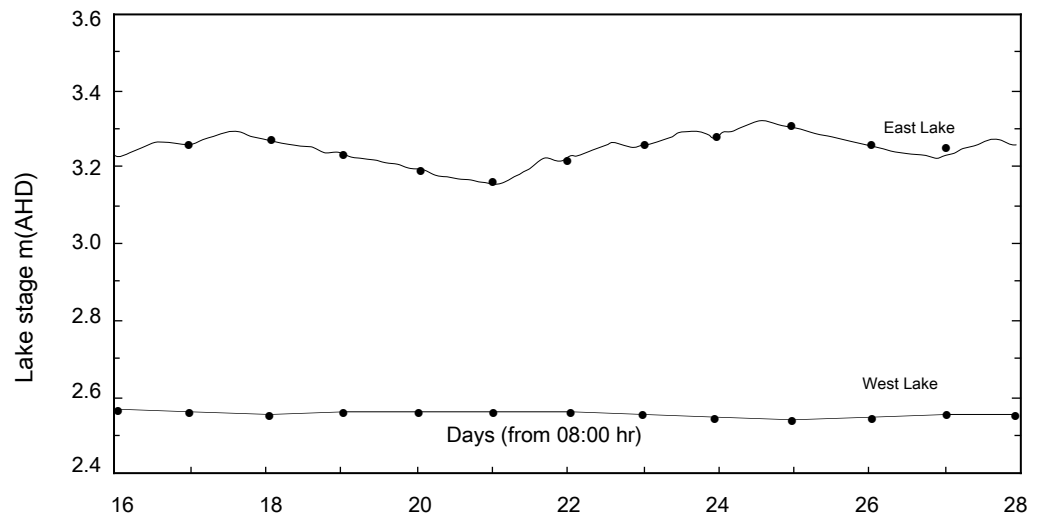
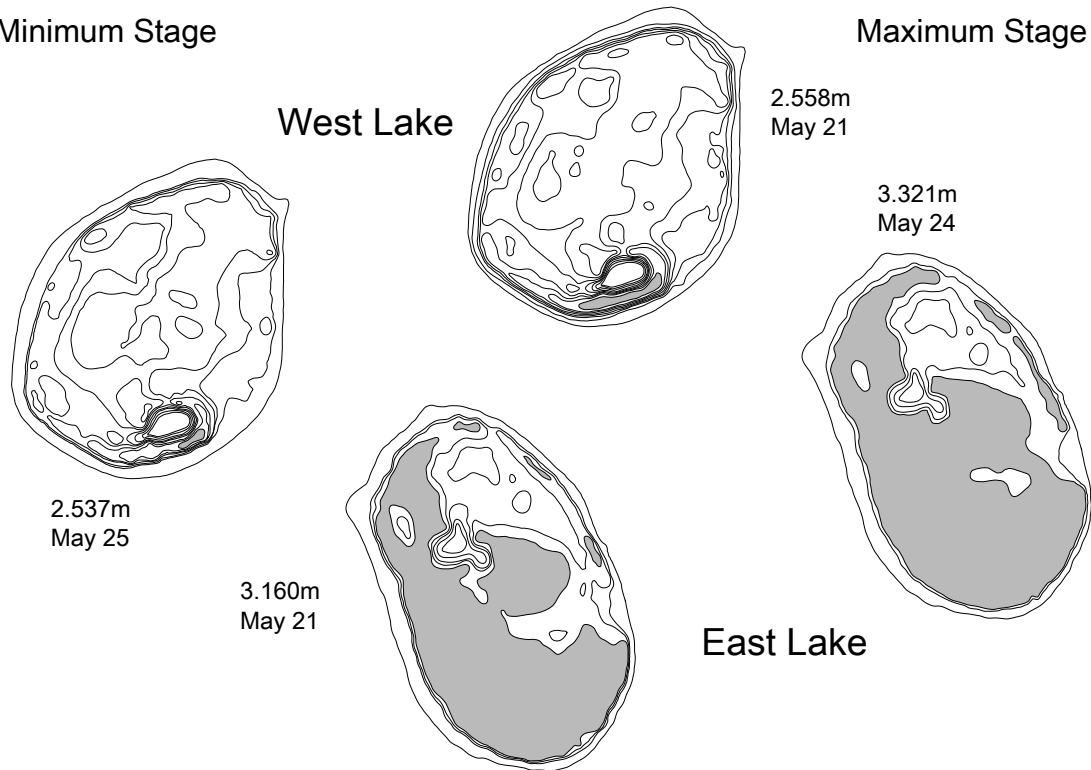
Minimum Stage

Maximum Stage



Minimum Stage

Maximum Stage





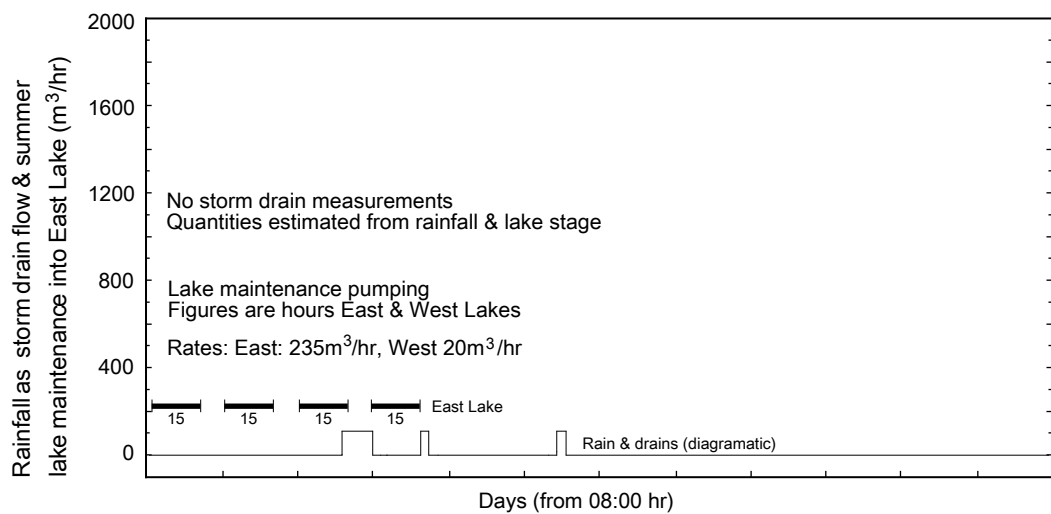
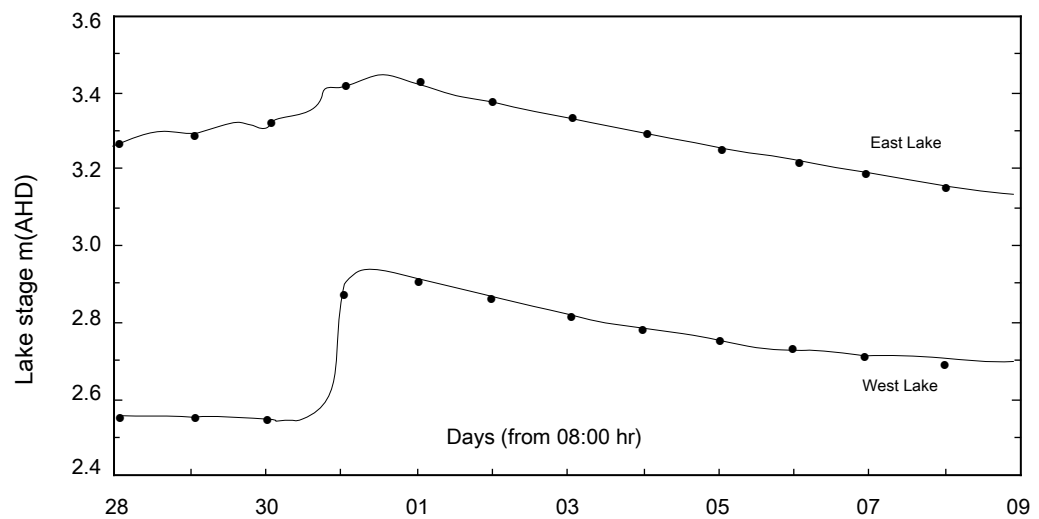
Minimum Stage

Maximum Stage

West Lake

2.903m  
June 013.447m  
May 312.542m  
May 303.127  
June 06

East Lake



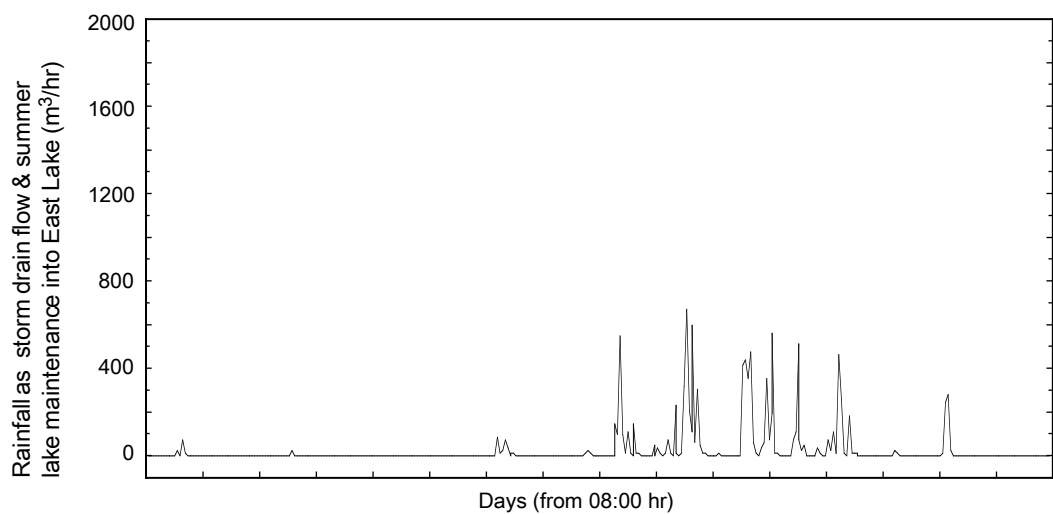
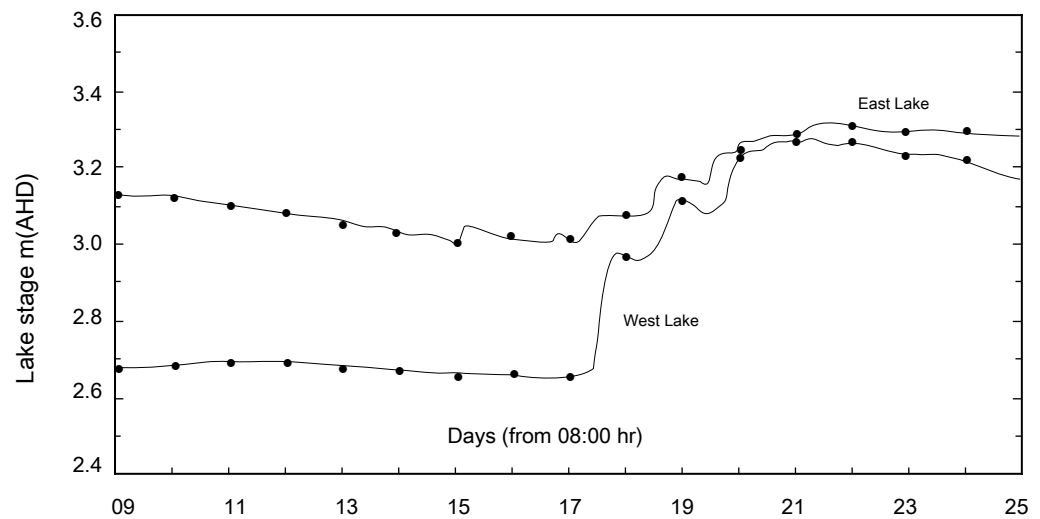
Minimum Stage

Maximum Stage

West Lake

3.262m  
June 21 & 223.306m  
June 212.655m  
June 15 & 172.996m  
June 15

East Lake



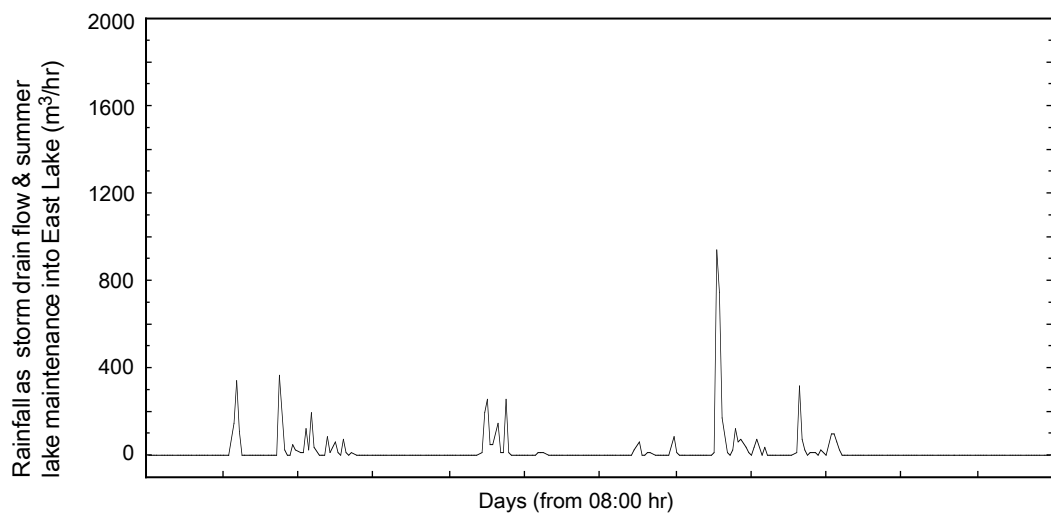
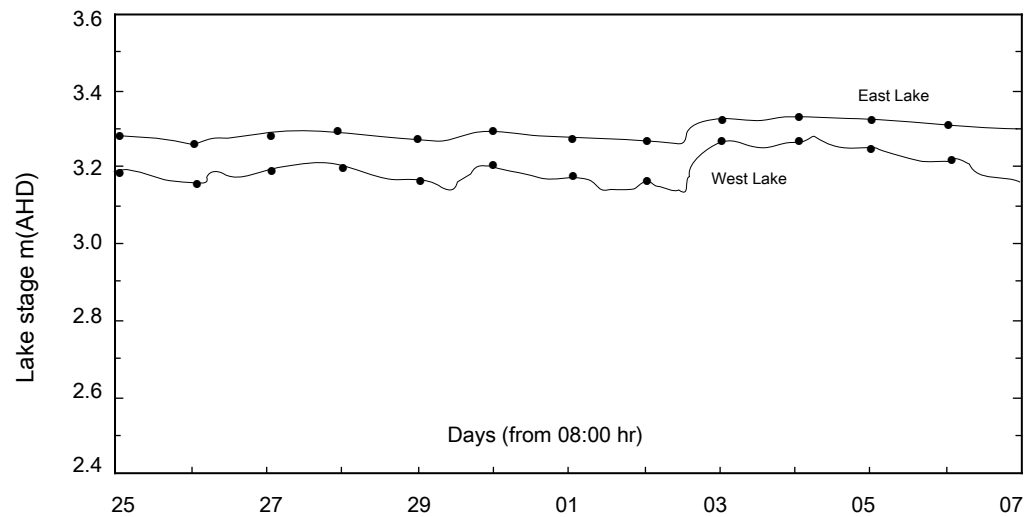
Minimum Stage

Maximum Stage

West Lake

3.262m  
July 03 & 043.330m  
July 043.154m  
June 263.256m  
July 02

East Lake



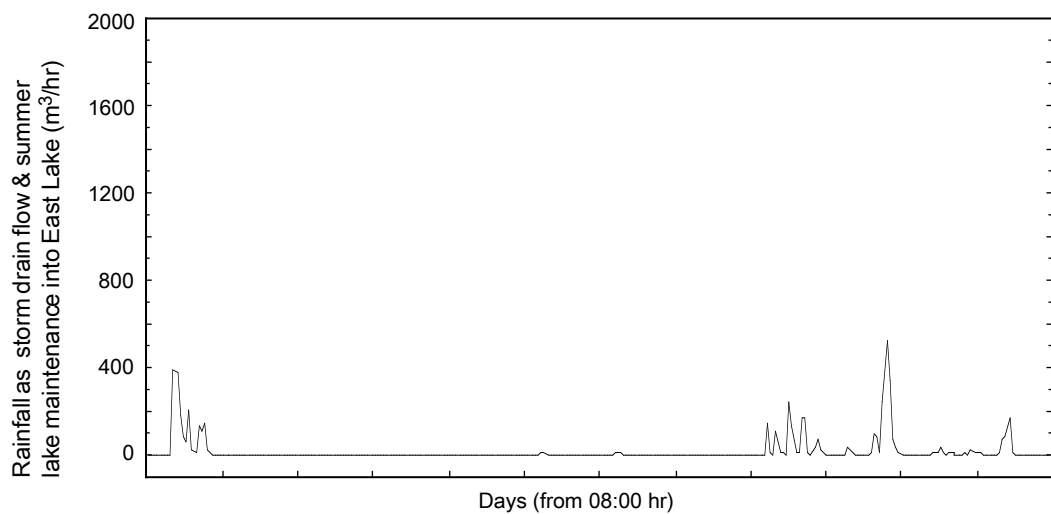
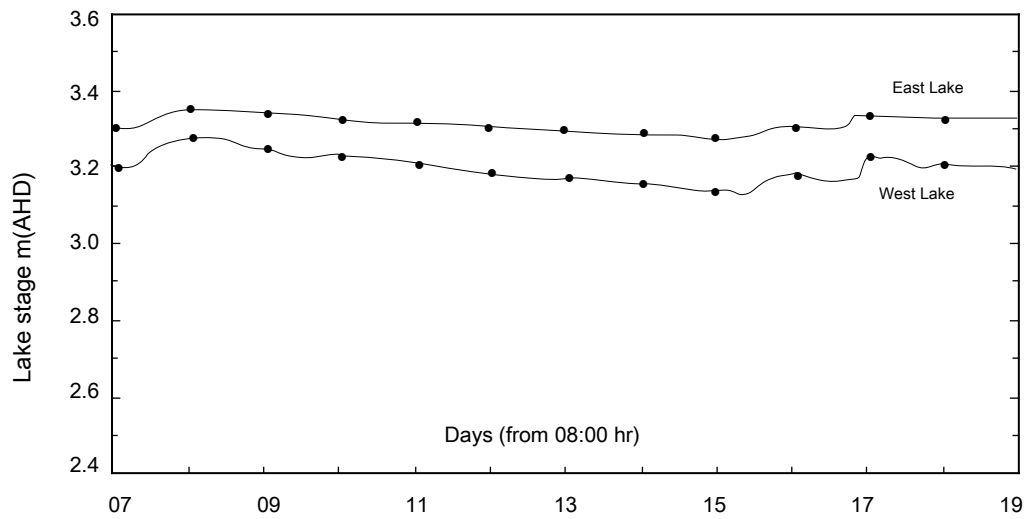
Minimum Stage

Maximum Stage

West Lake

3.271m  
July 083.344m  
July 083.135m  
July 153.272m  
July 15

East Lake



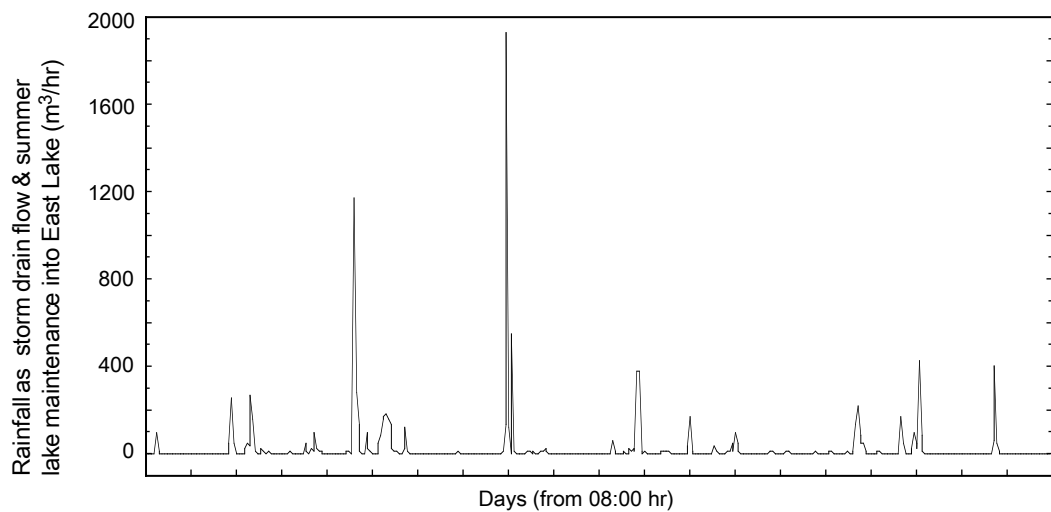
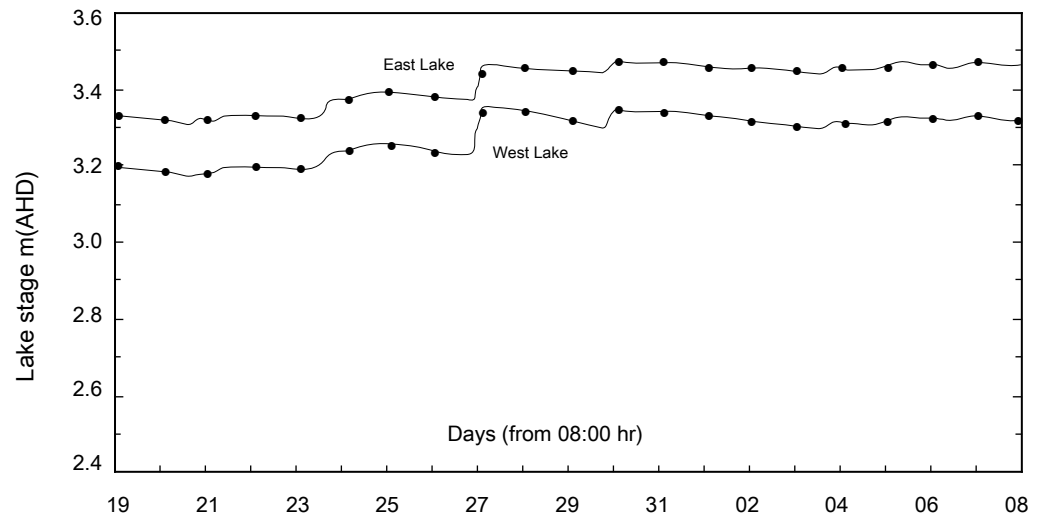
Minimum Stage

Maximum Stage

West Lake

3.340m  
July 303.465m  
July 303.177m  
July 213.308m  
July 21

East Lake



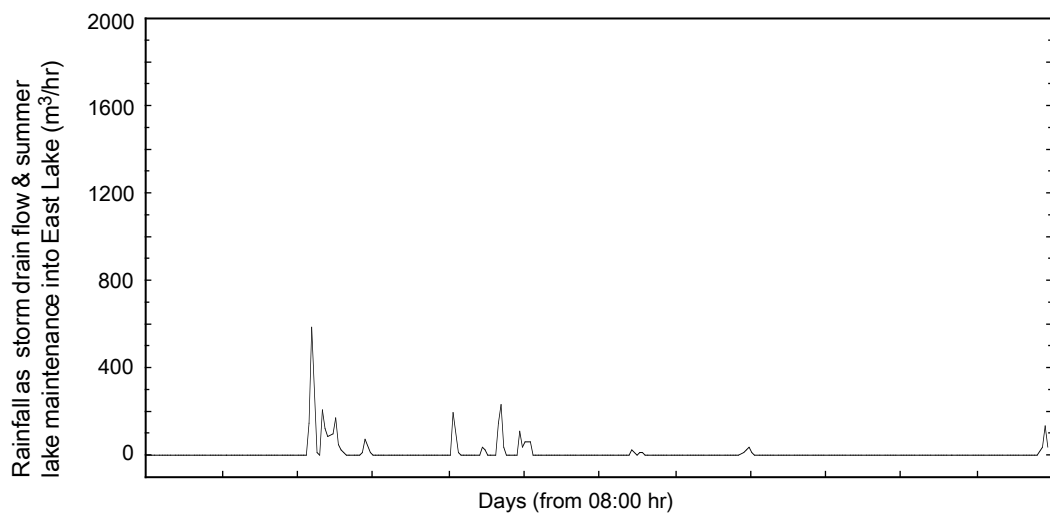
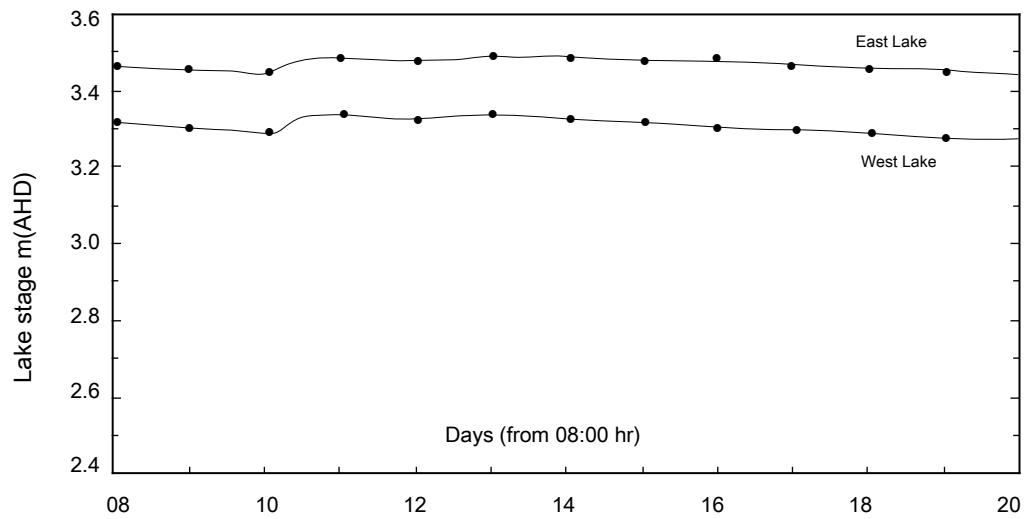
Minimum Stage

Maximum Stage

West Lake

3.335m  
August 133.488m  
August 133.273m  
August 193.440m  
August 19

East Lake



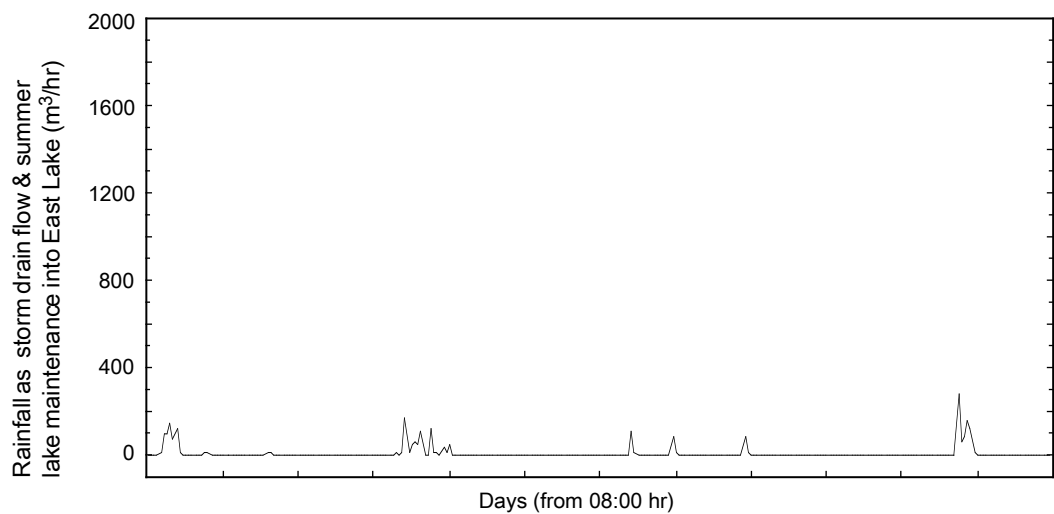
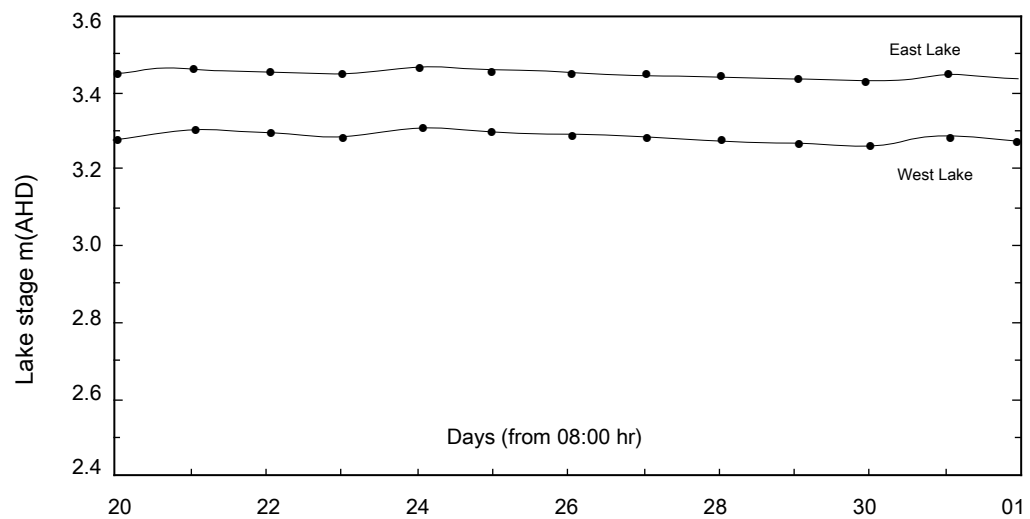
Minimum Stage

Maximum Stage

West Lake

3.304m  
August 243.463m  
August 243.255m  
August 303.427m  
August 31

East Lake



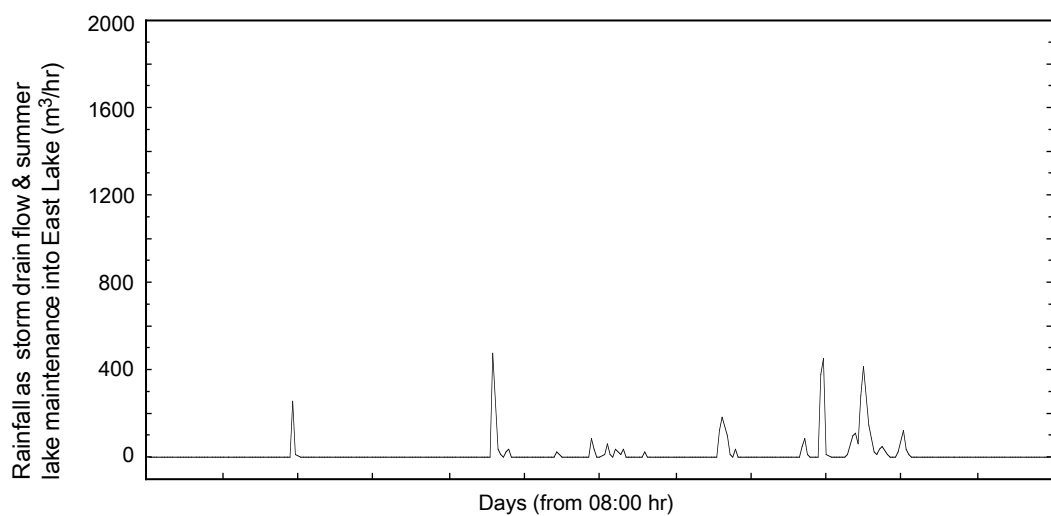
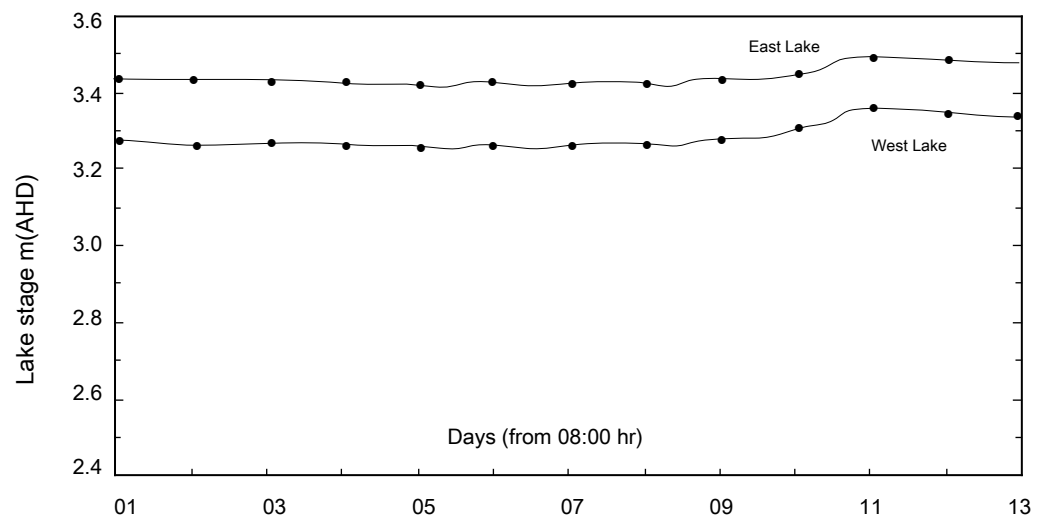
Minimum Stage

Maximum Stage

West Lake

3.354m  
September 113.490m  
September 113.248m  
September 053.412m  
September 05

East Lake





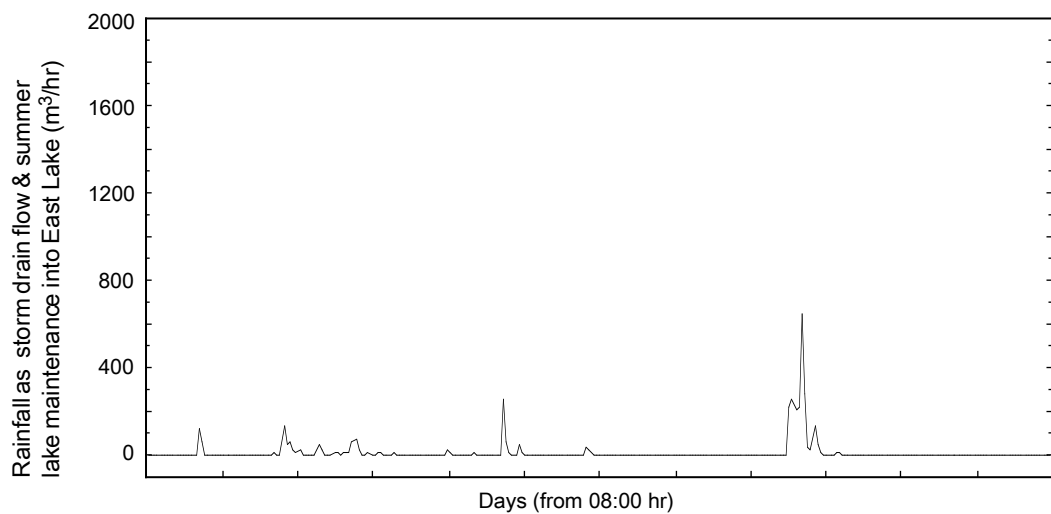
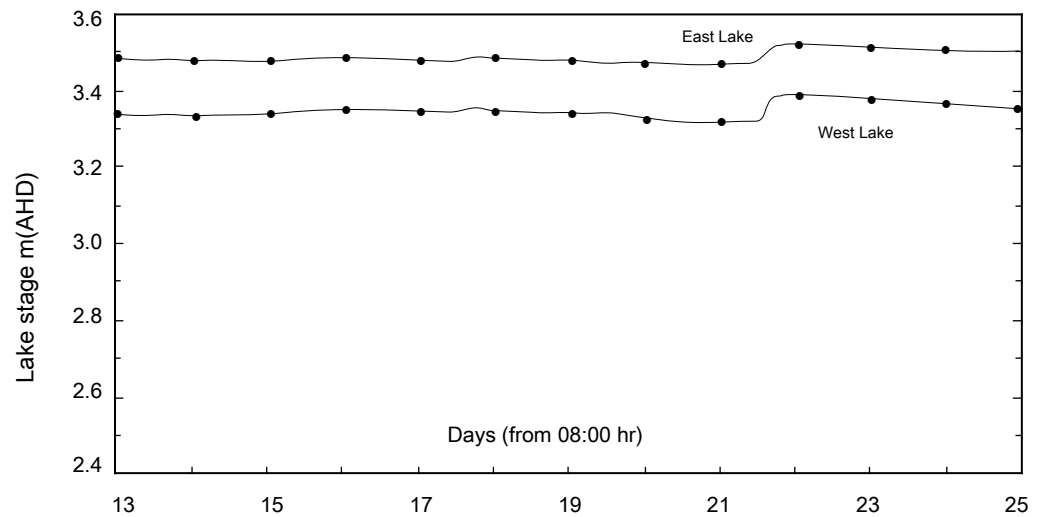
Minimum Stage

Maximum Stage

West Lake

3.384m  
September 223.515m  
September 223.315m  
September 213.465m  
September 21

East Lake



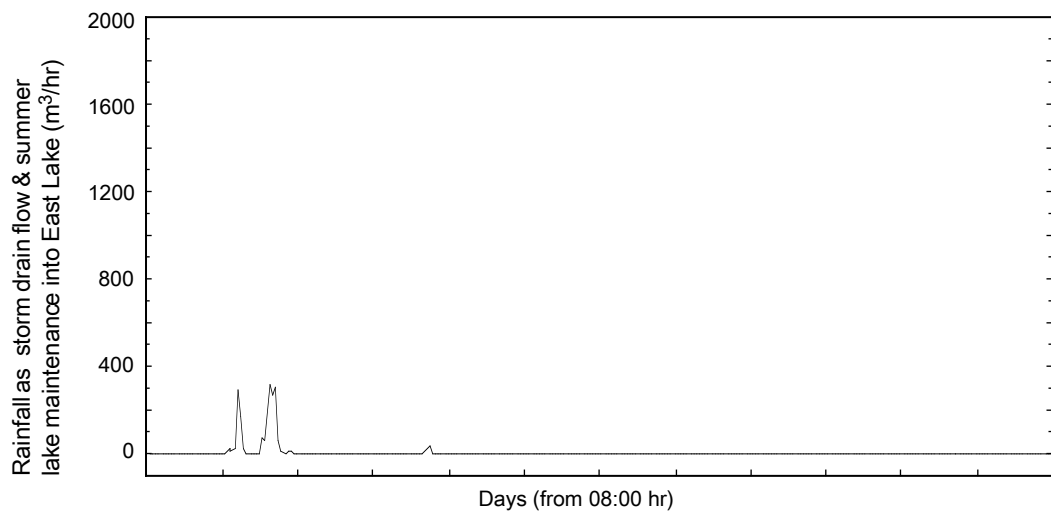
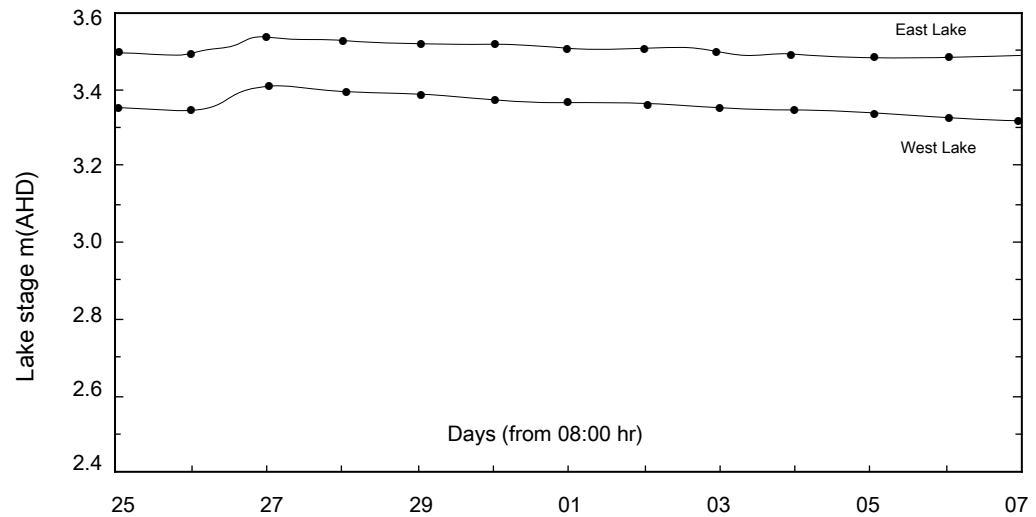
Minimum Stage

Maximum Stage

West Lake

3.404m  
September 273.532m  
September 273.317m  
October 073.474m  
October 06

East Lake



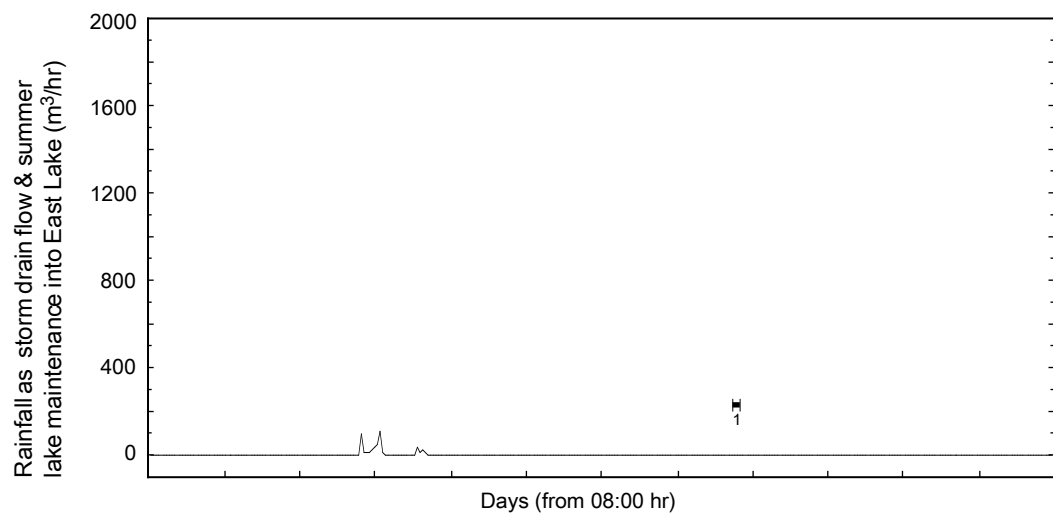
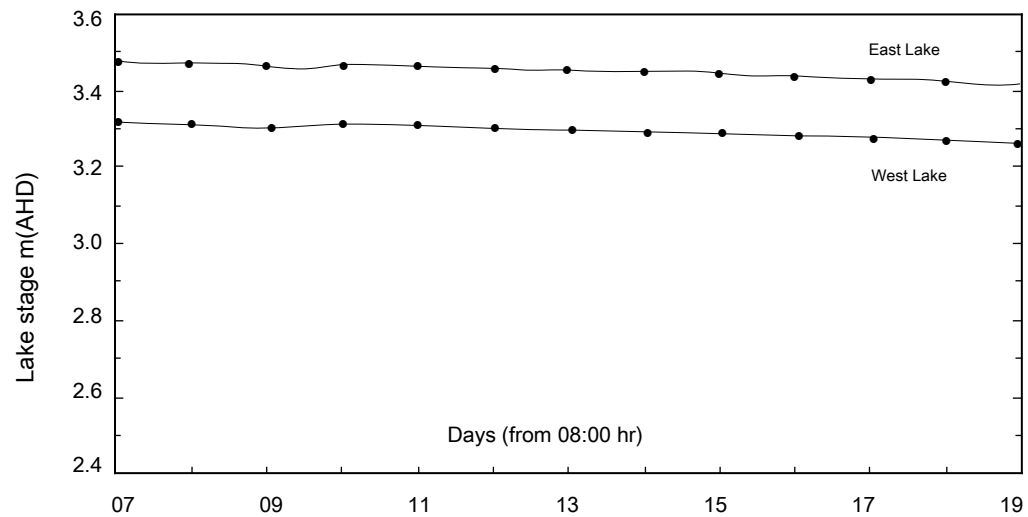
Minimum Stage

Maximum Stage

West Lake

3.317m  
October 073.472m  
October 073.258m  
October 193.418m  
October 18

East Lake



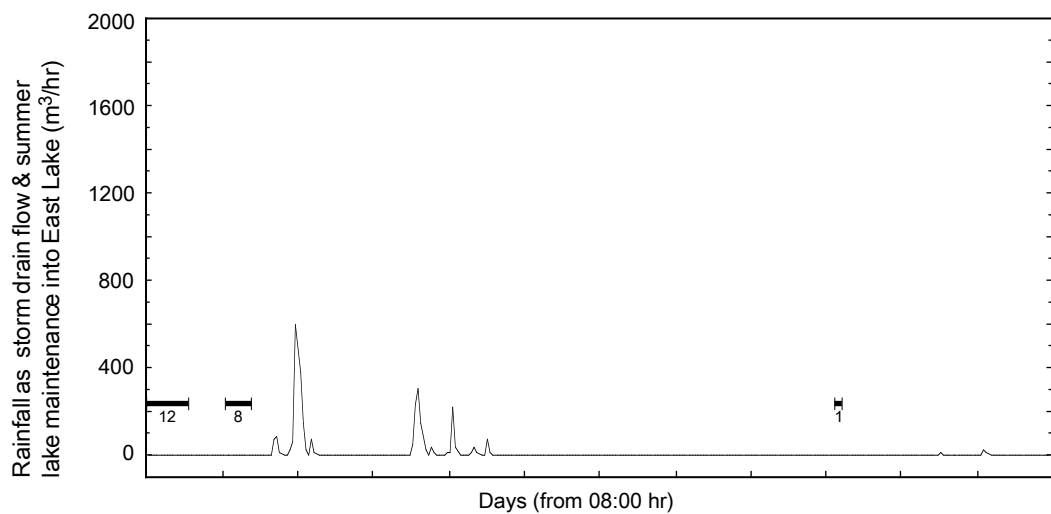
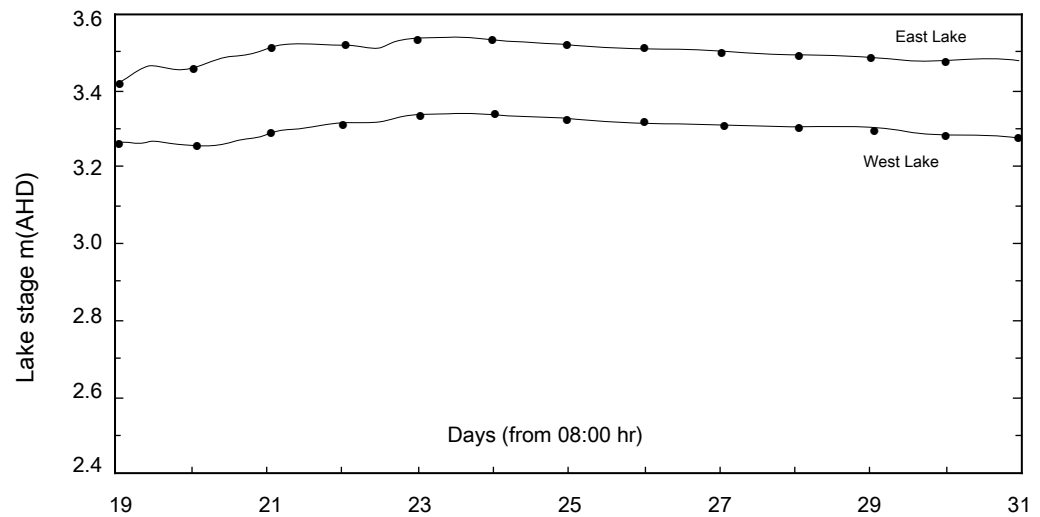
Minimum Stage

Maximum Stage

West Lake

3.332m  
October 243.527m  
October 233.254m  
October 203.414m  
October 19

East Lake



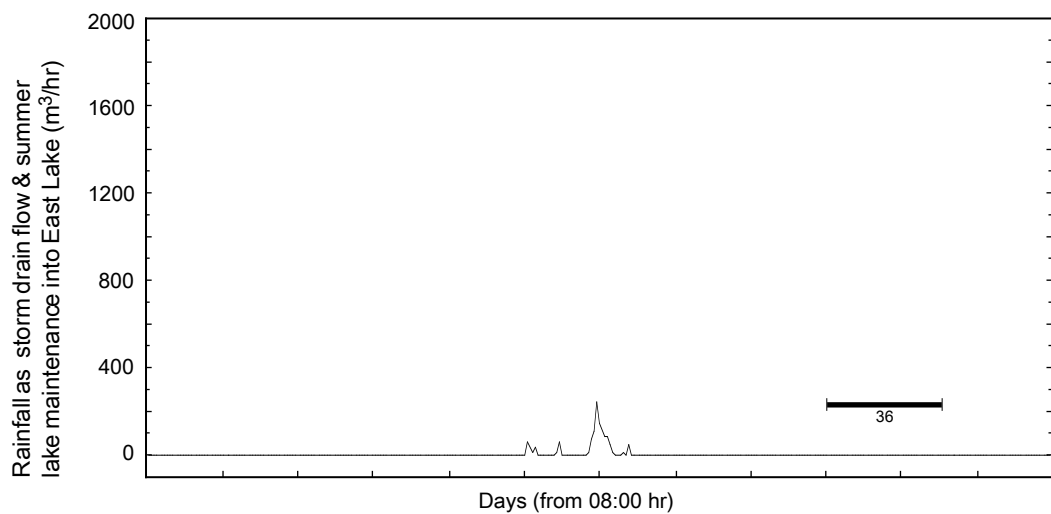
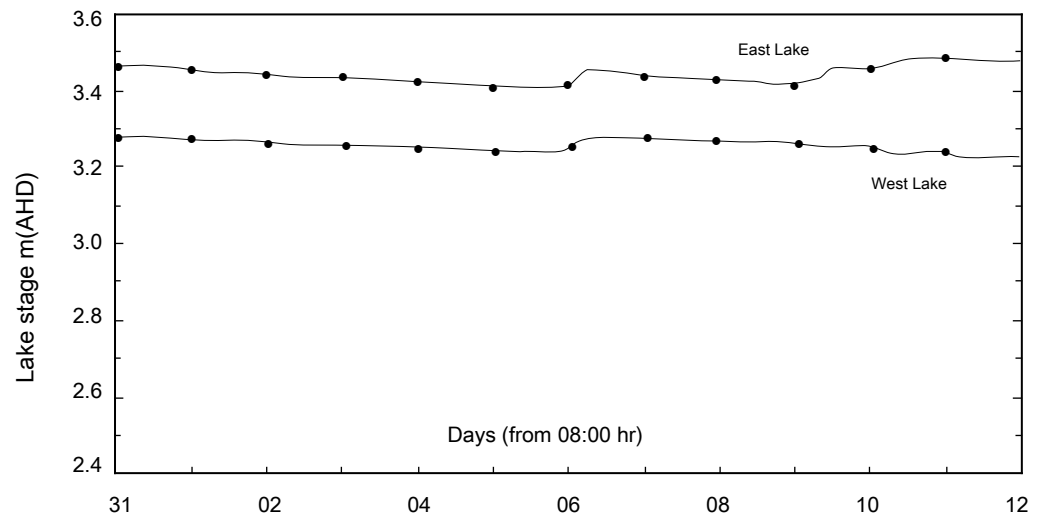
Minimum Stage

Maximum Stage

West Lake

3.275m  
October 313.478m  
November 113.225m  
November 123.399m  
November 06

East Lake



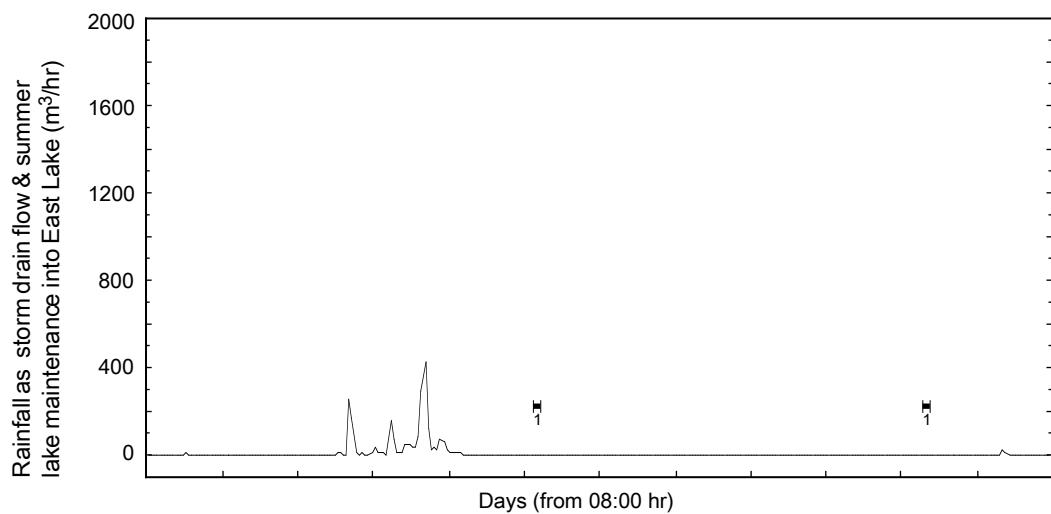
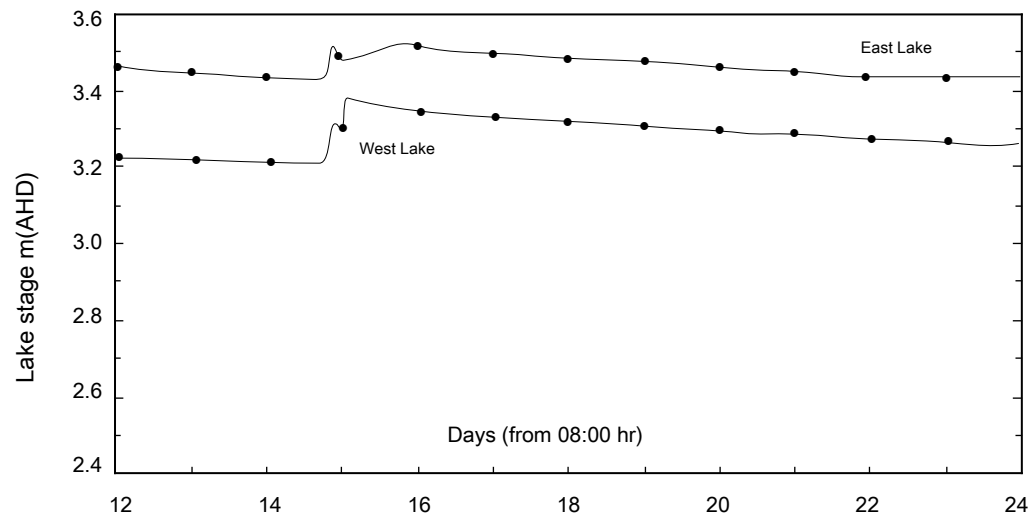
Minimum Stage

Maximum Stage

West Lake

3.340m  
November 163.503m  
November 163.212m  
November 143.413m  
November 24

East Lake



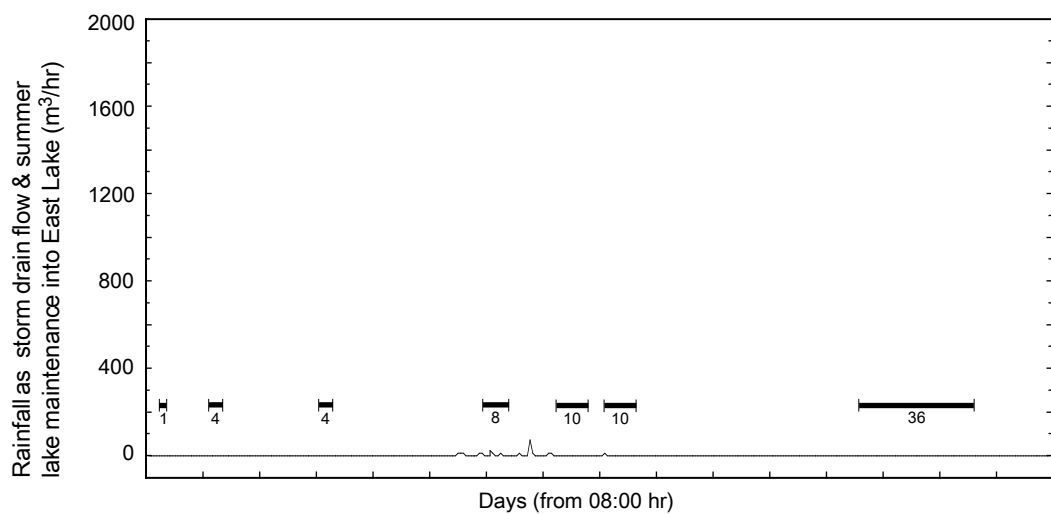
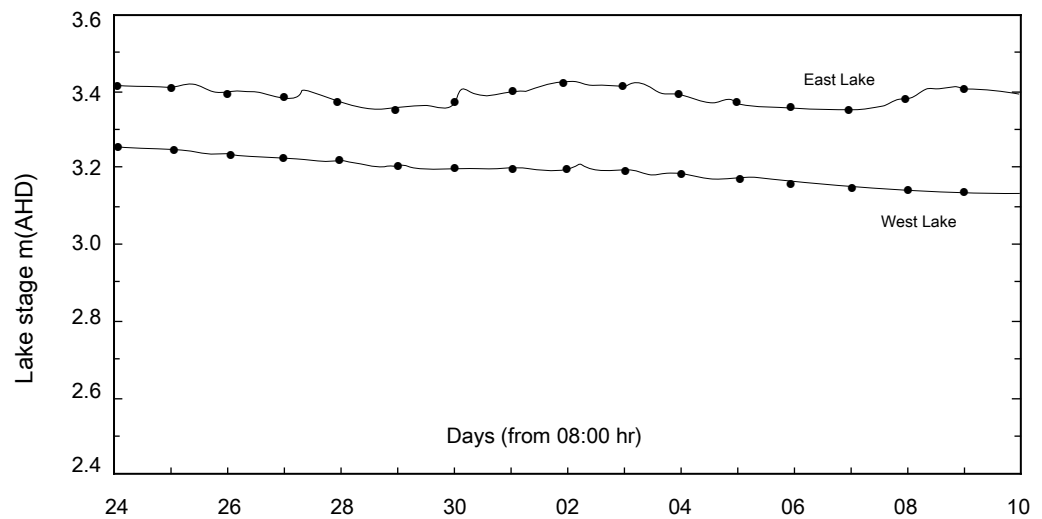
Minimum Stage

Maximum Stage

West Lake

3.253m  
November 243.446m  
December 023.122m  
December 103.343m  
December 06

East Lake



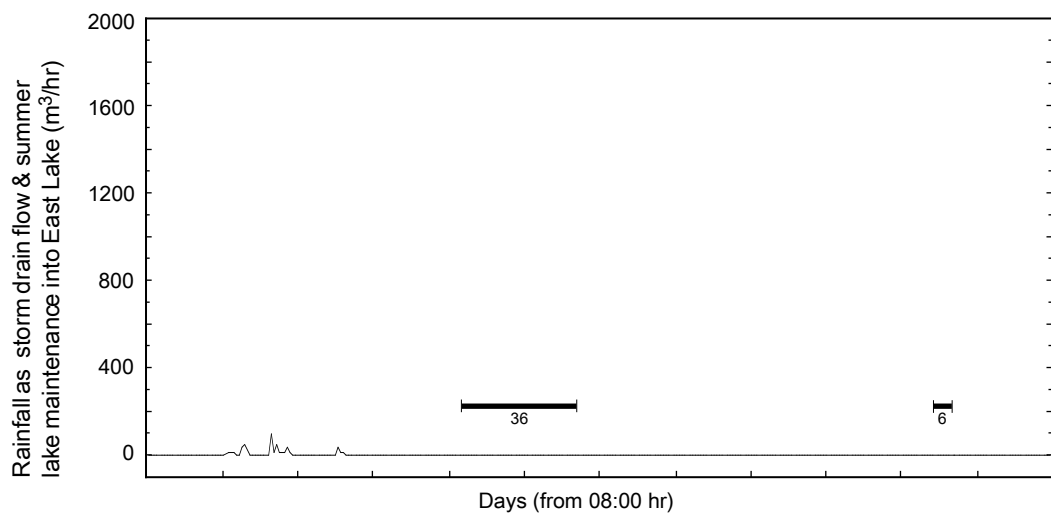
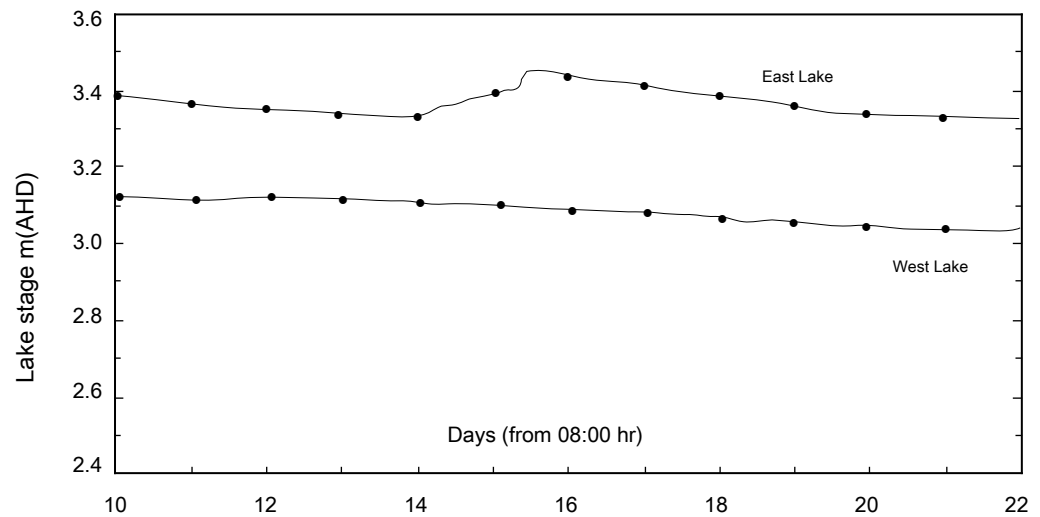
Minimum Stage

Maximum Stage

West Lake

3.122m  
December 103.451m  
December 153.026m  
December 223.305m  
December 22

East Lake





Minimum Stage

Maximum Stage

West Lake

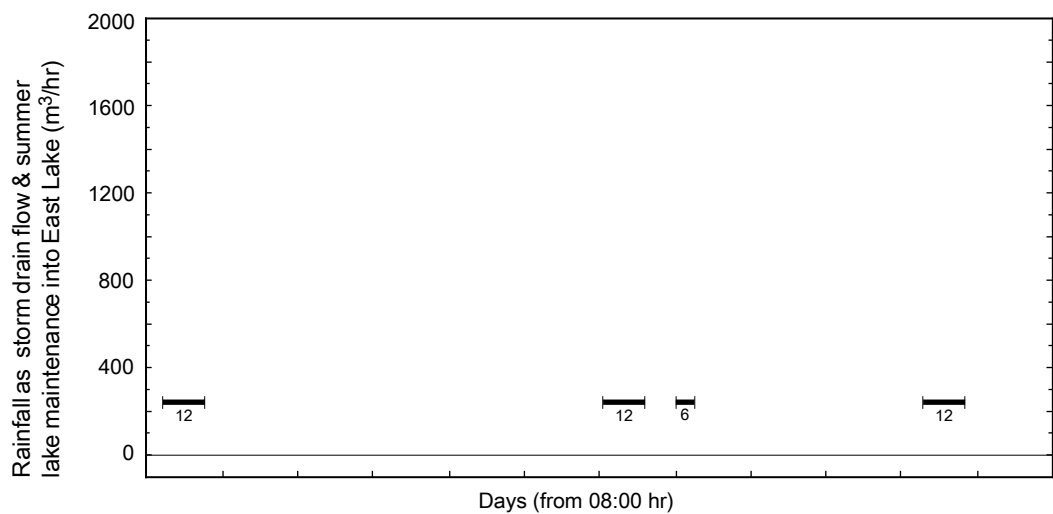
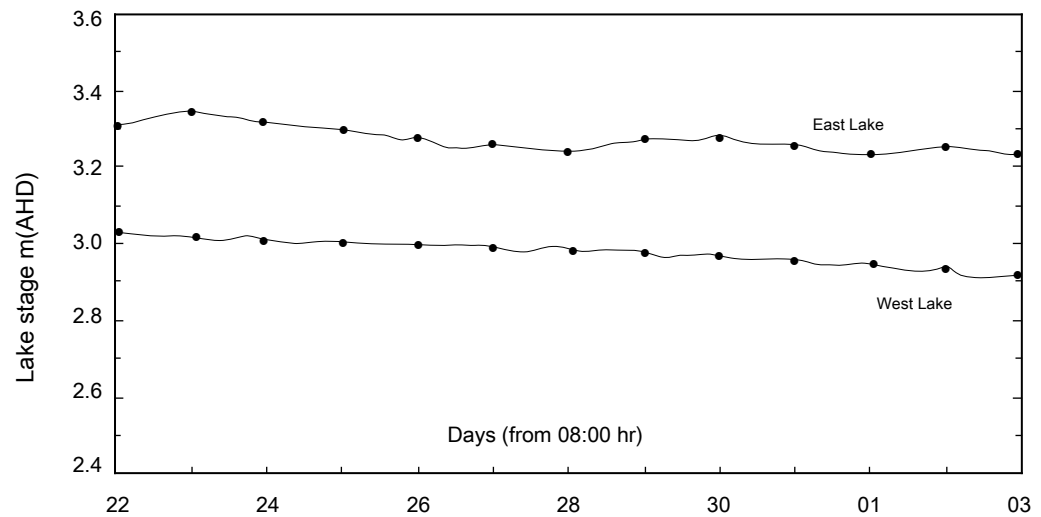
3.026m  
December 22

3.342m  
December 23

2.919m  
January 03

3.214m  
January 01

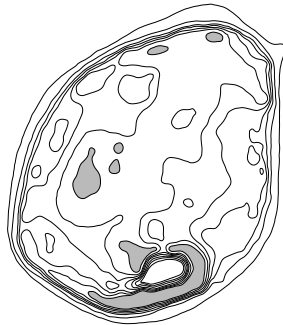
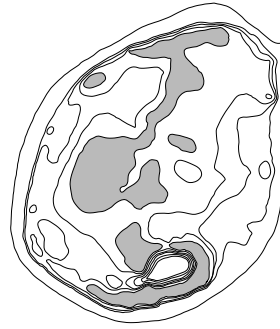
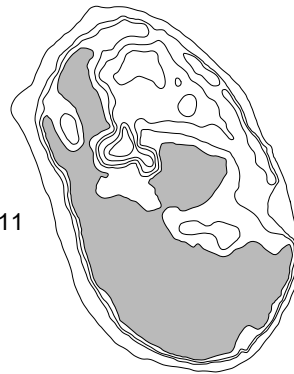
East Lake



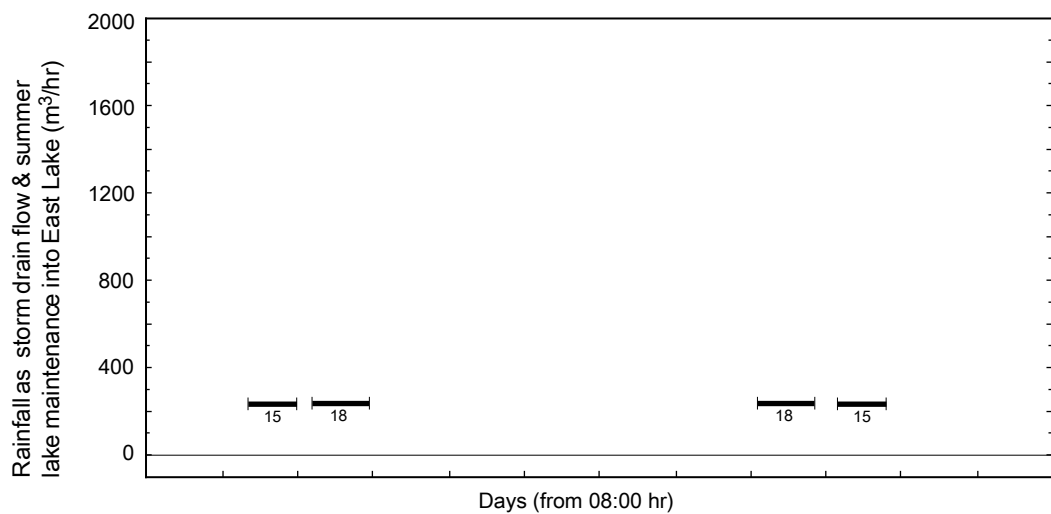
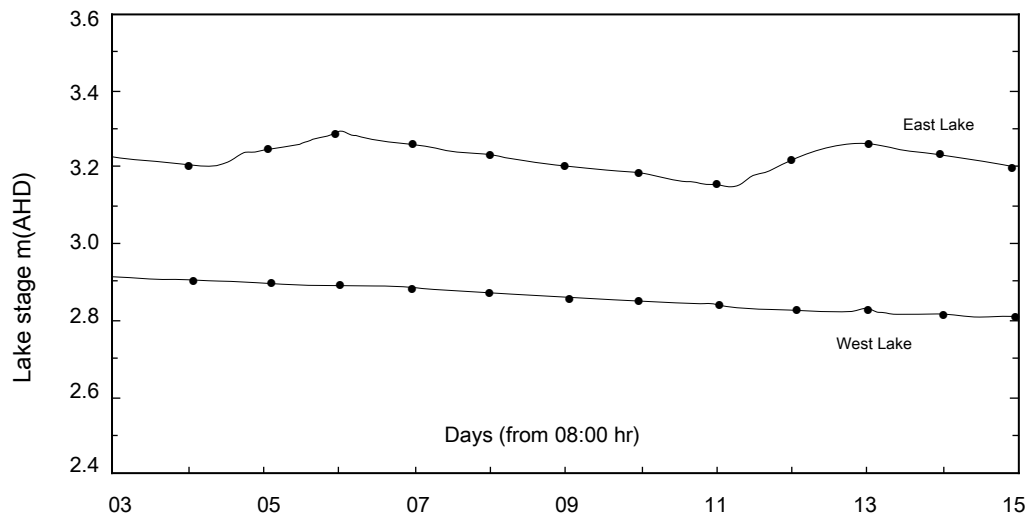
Minimum Stage

Maximum Stage

West Lake

2.805m  
January 152.919m  
January 033.148m  
January 11

East Lake

3.302m  
January 06

Minimum Stage

Maximum Stage

West Lake

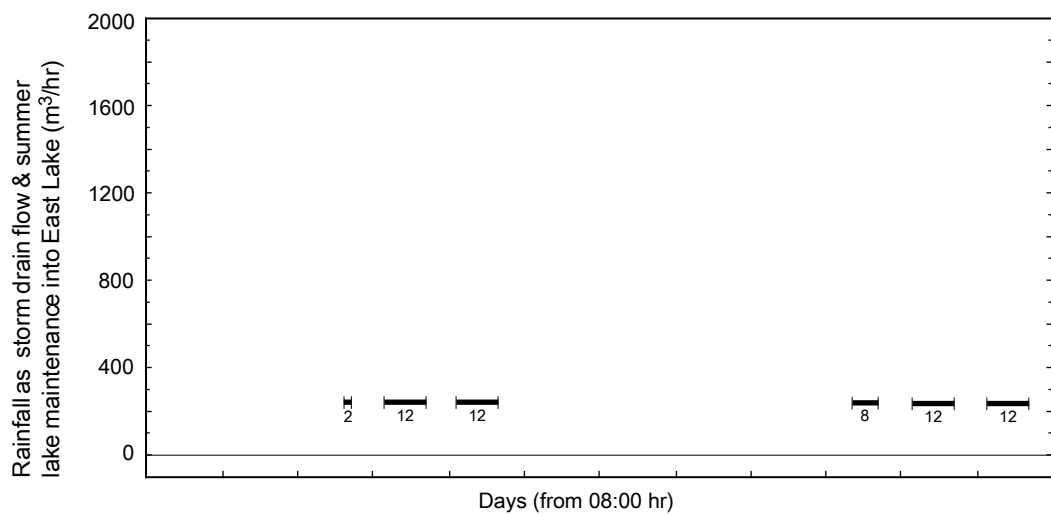
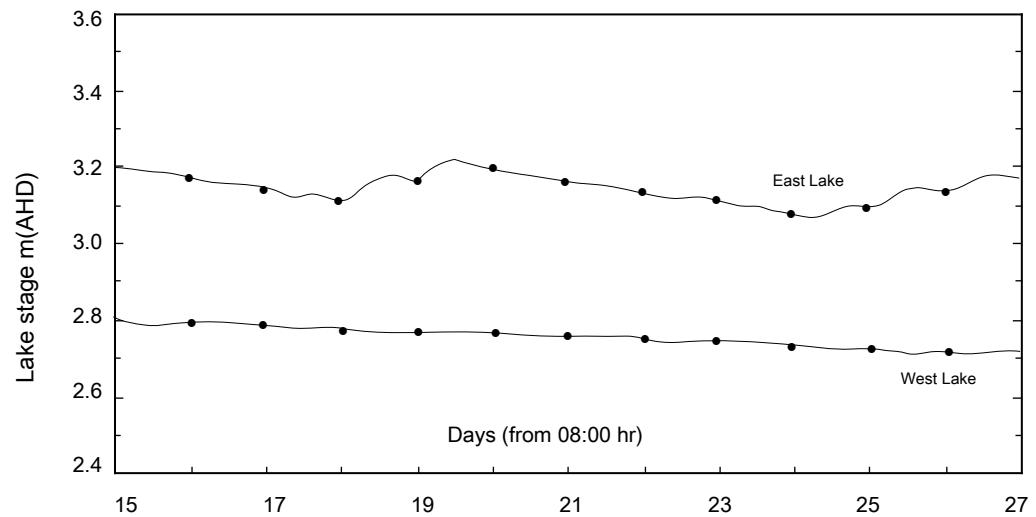
2.805m  
January 15

3.215m  
January 19

2.713m  
January 27

3.063m  
January 24

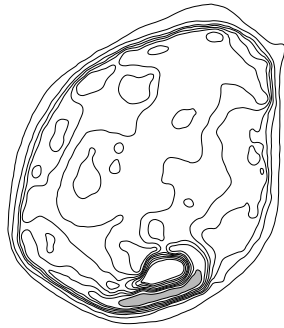
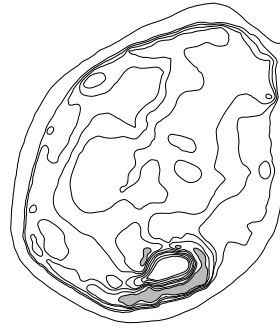
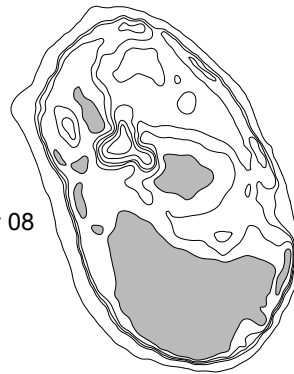
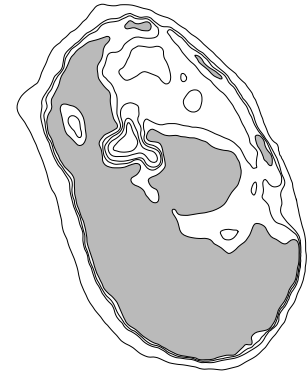
East Lake



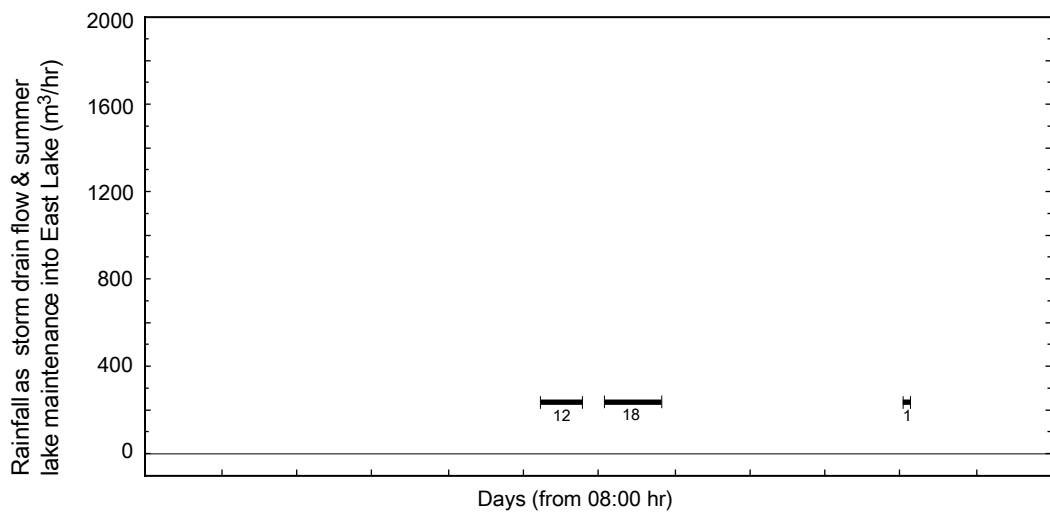
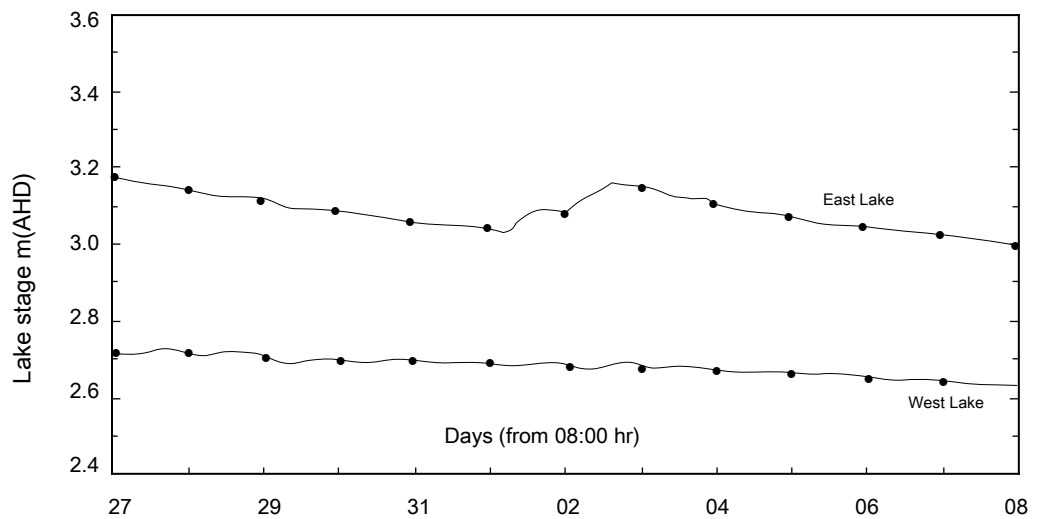
Minimum Stage

Maximum Stage

West Lake

2.630m  
February 082.713m  
January 272.994m  
February 083.172m  
January 27

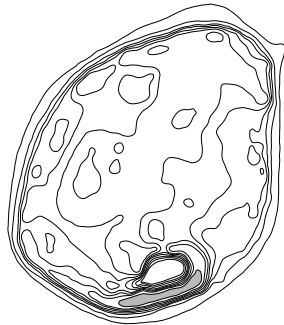
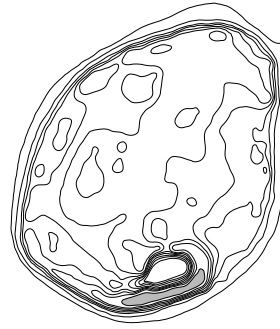
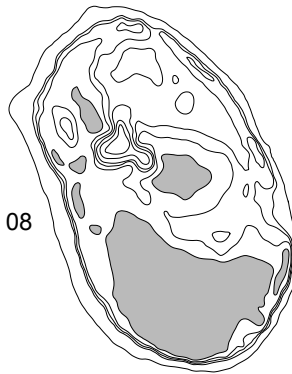
East Lake



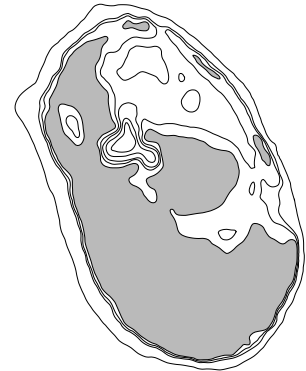
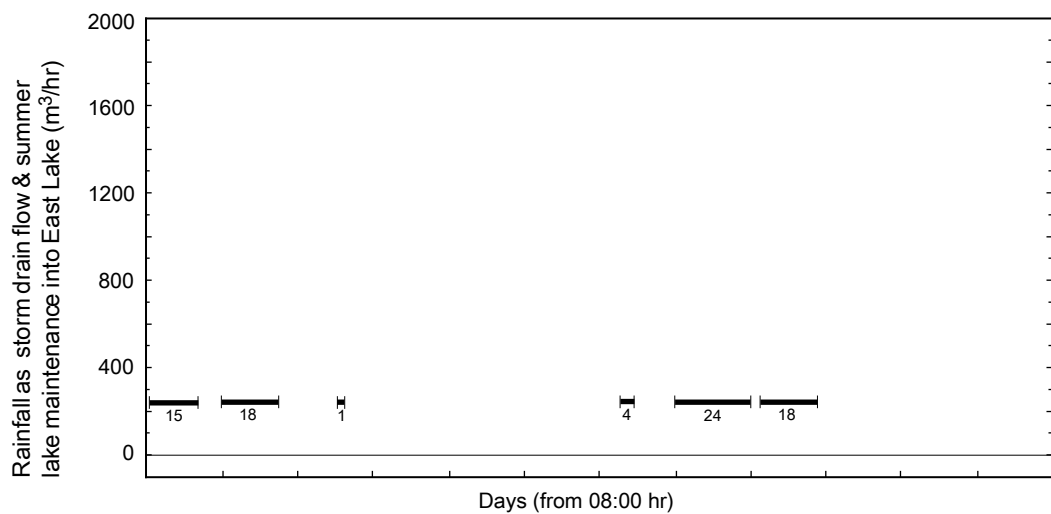
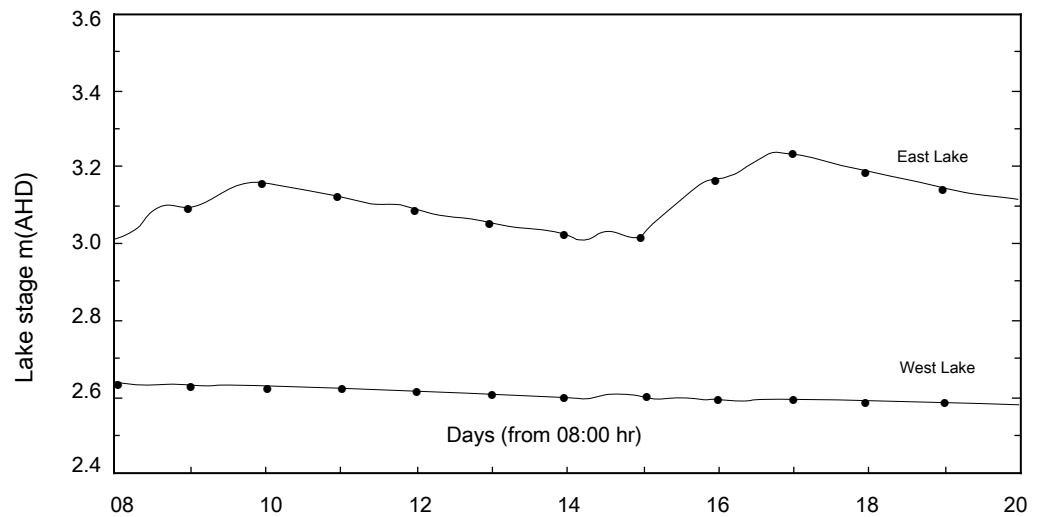
Minimum Stage

Maximum Stage

West Lake

2.585m  
February 202.630m  
February 082.999m  
February 08

East Lake

3.232m  
February 17

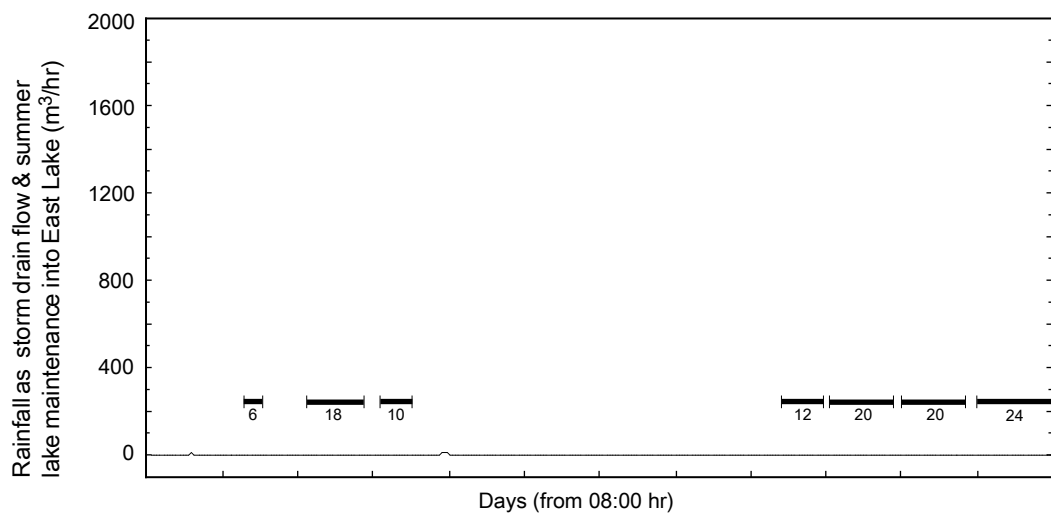
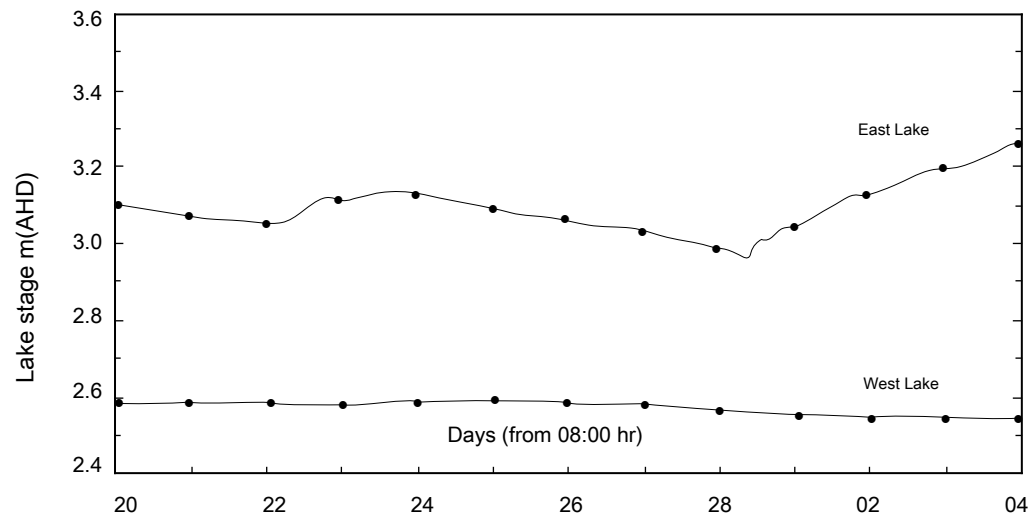
Minimum Stage

Maximum Stage

West Lake

2.590m  
February 253.256m  
March 042.540m  
March 03 & 042.927m  
February 28

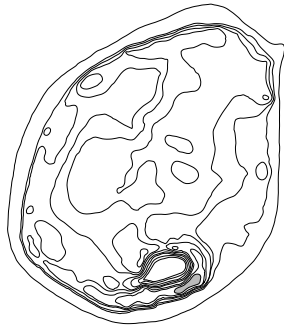
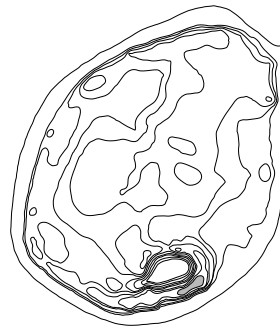
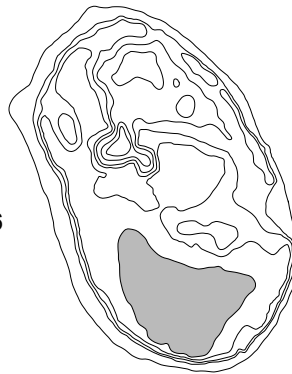
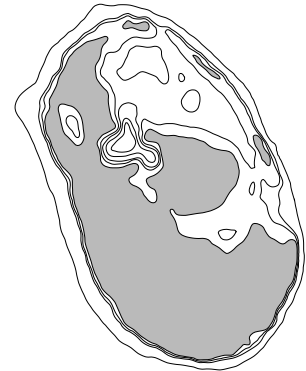
East Lake



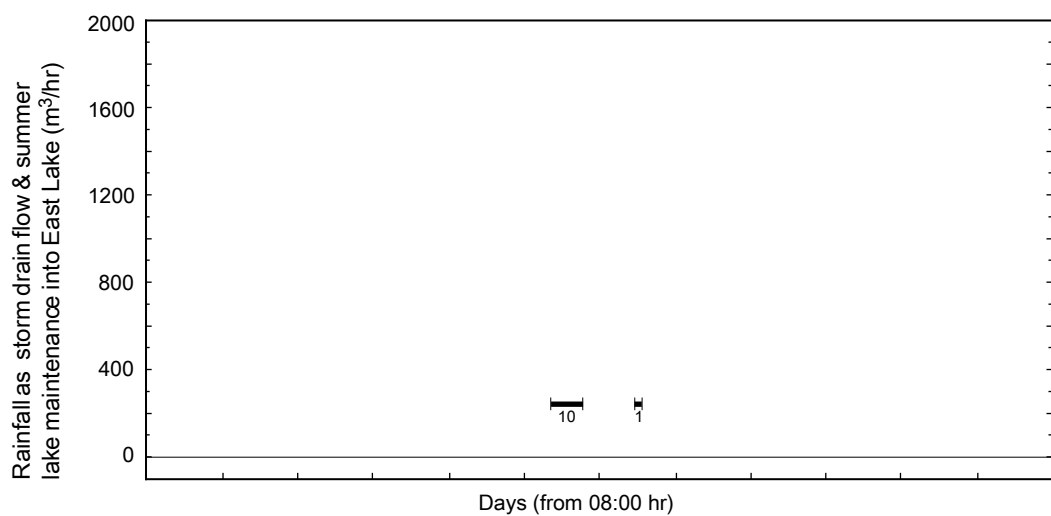
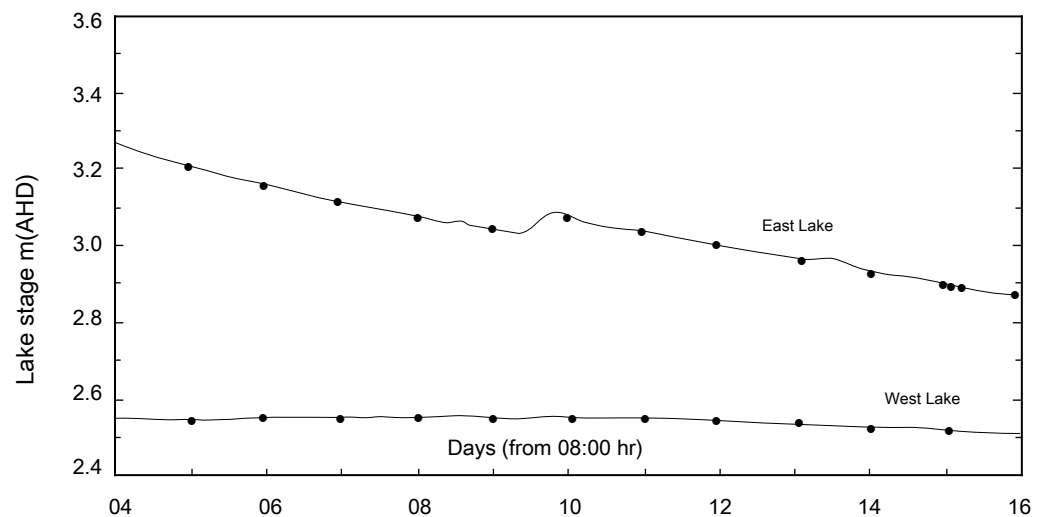
Minimum Stage

Maximum Stage

West Lake

2.511m  
March 162.540m  
March 042.866m  
March 163.256m  
March 04

East Lake



Minimum Stage

Maximum Stage

West Lake

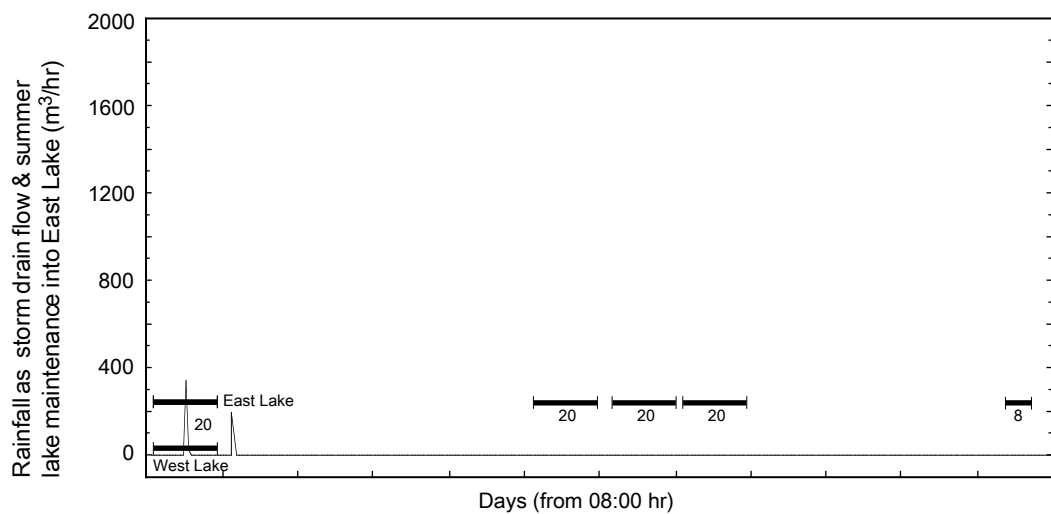
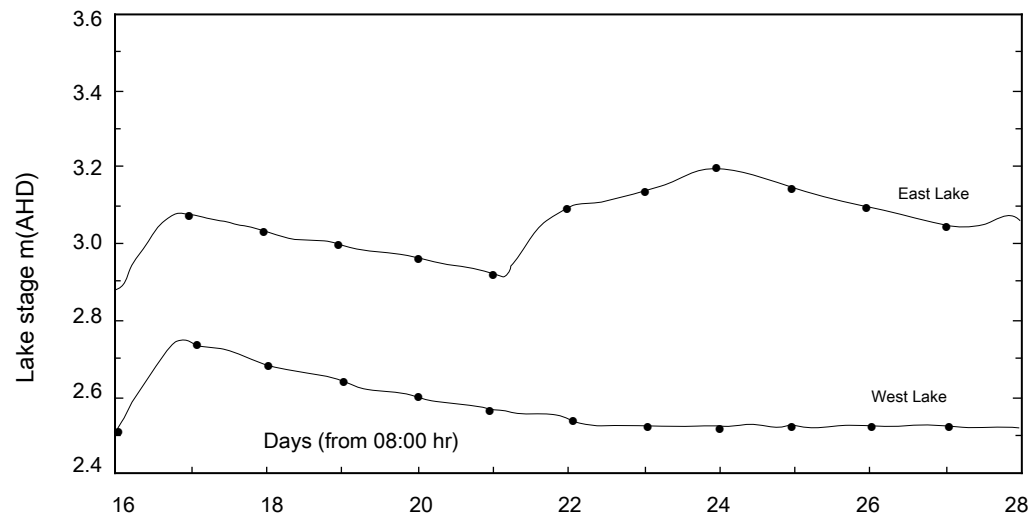
2.733m  
March 17

3.191m  
March 24

2.511m  
March 16

2.864m  
March 16

East Lake





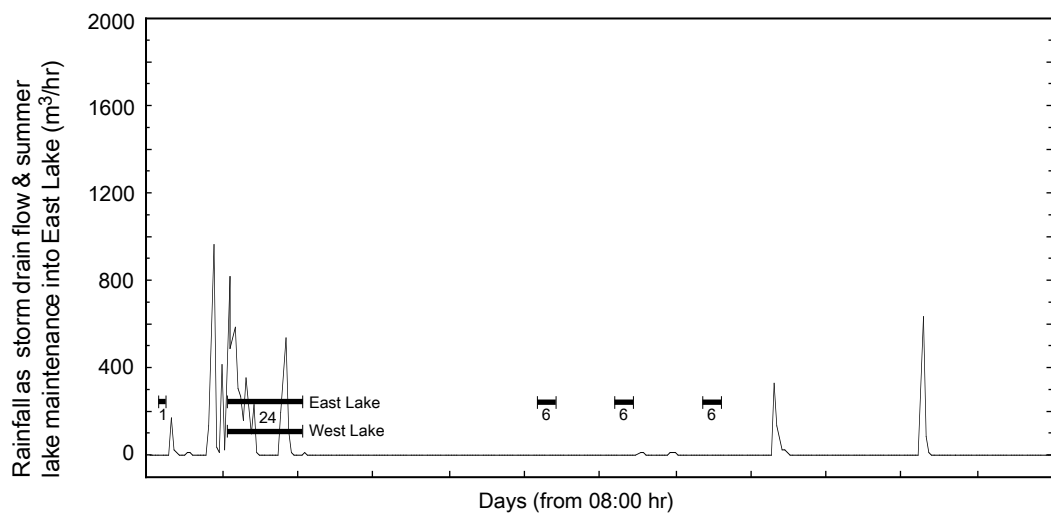
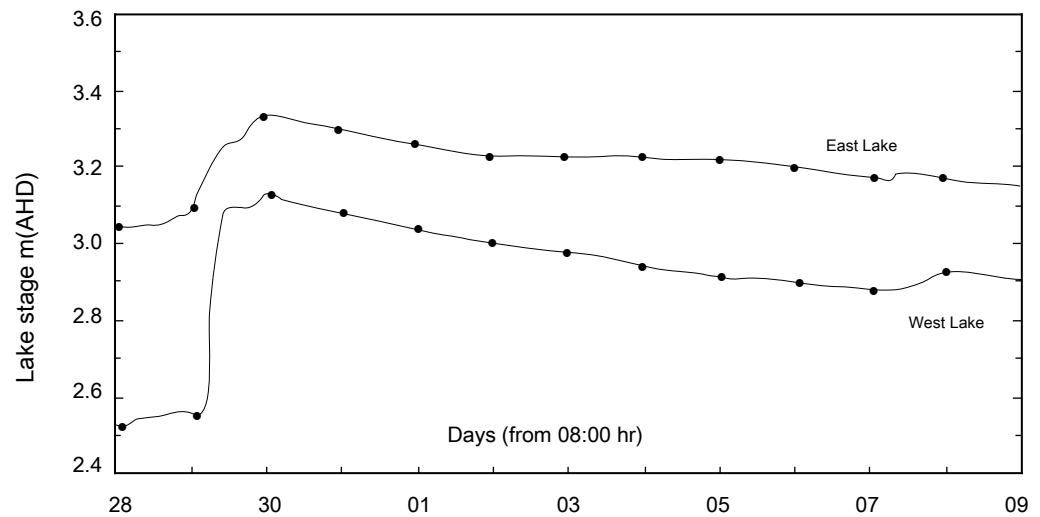
Minimum Stage

Maximum Stage

West Lake

3.125m  
March 303.333m  
March 302.521m  
March 283.031m  
March 29

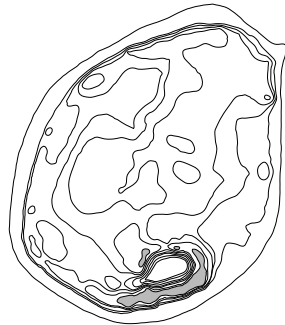
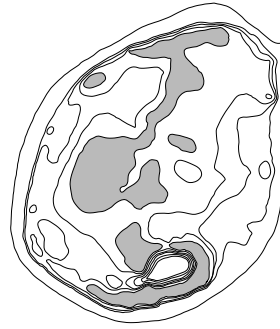
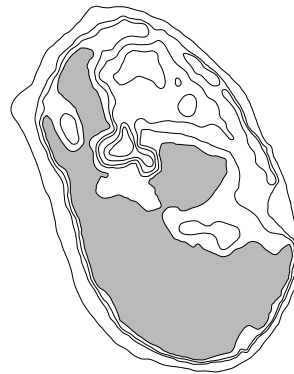
East Lake



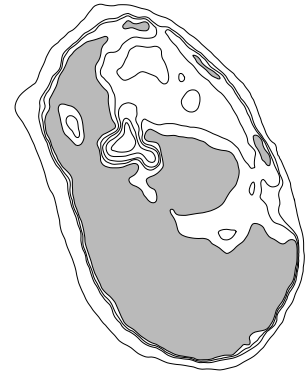
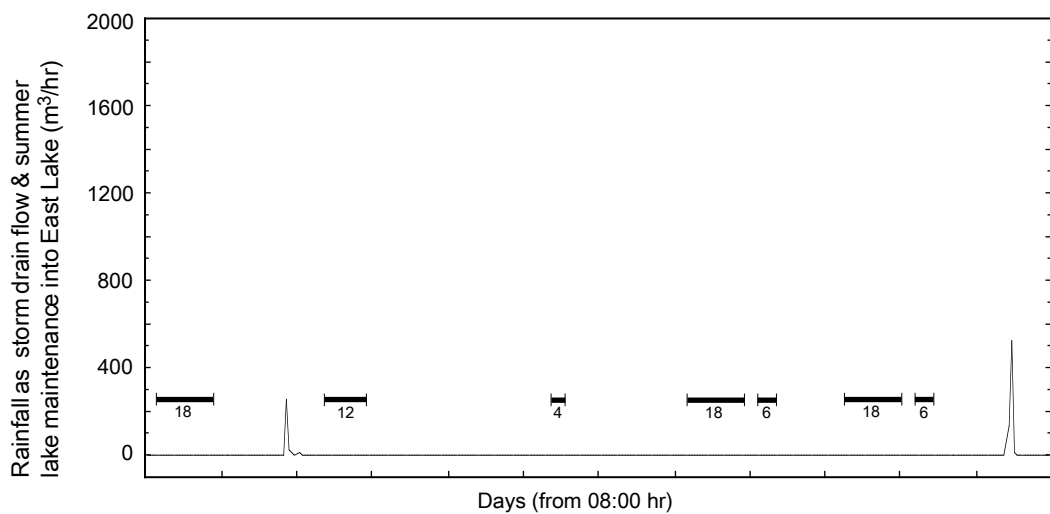
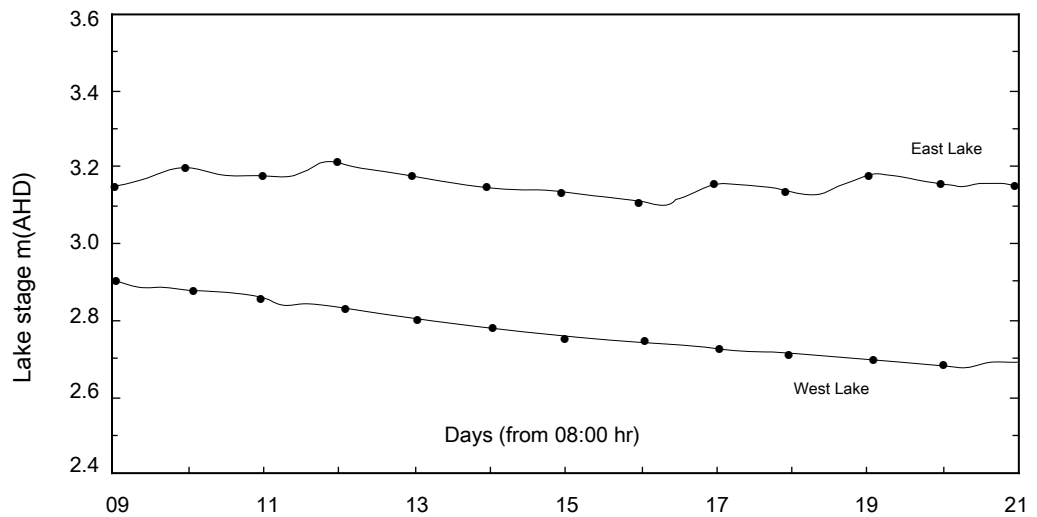
Minimum Stage

Maximum Stage

West Lake

2.682m  
April 202.903m  
April 093.092m  
April 16

East Lake

3.208m  
April 12

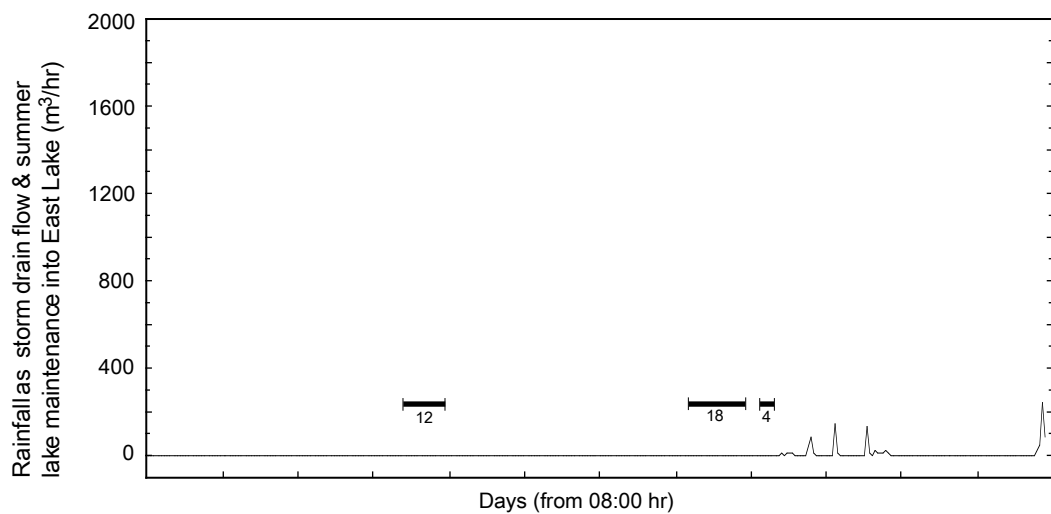
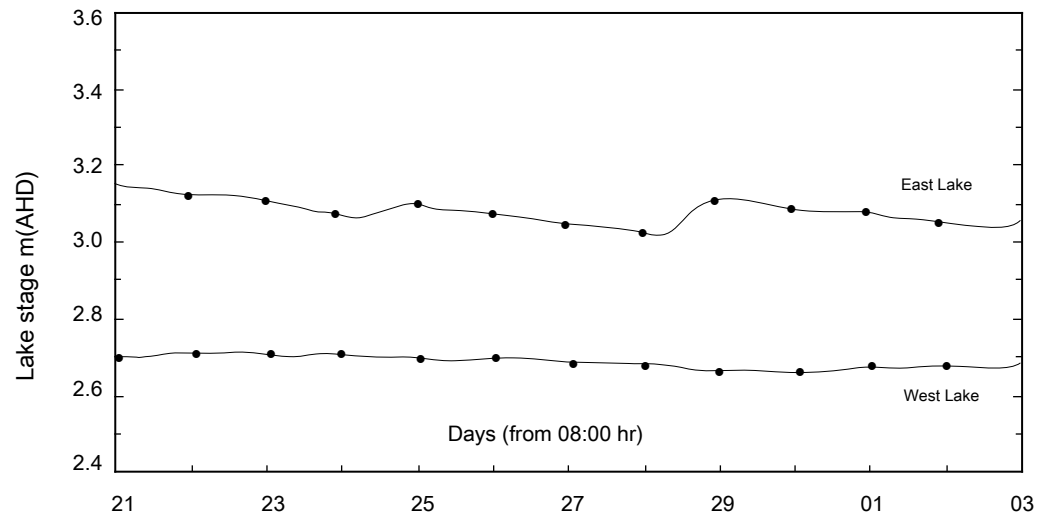
Minimum Stage

Maximum Stage

West Lake

2.710m  
April 22 & 233.147m  
April 212.656m  
April 303.021m  
April 28

East Lake



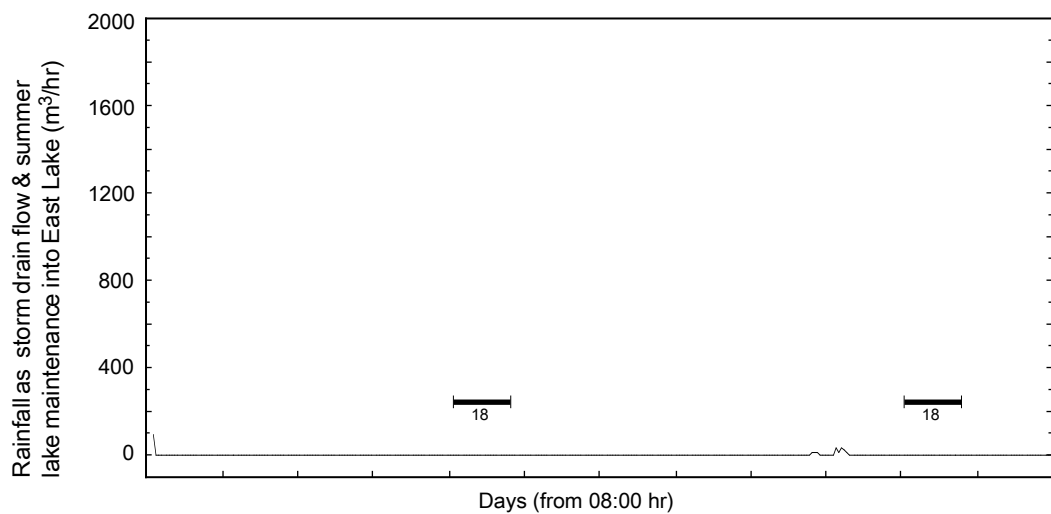
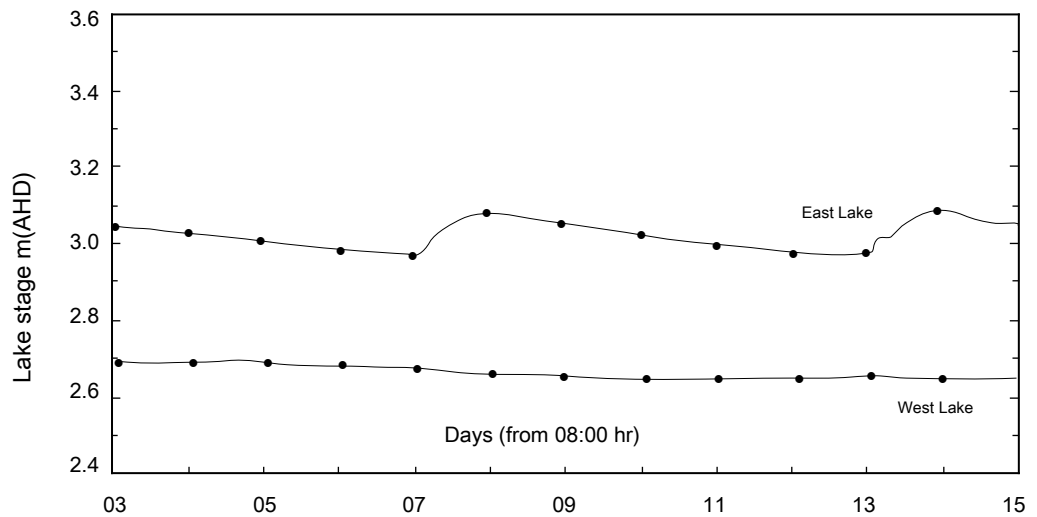
Minimum Stage

Maximum Stage

West Lake

2.689m  
May 043.086m  
May 142.640m  
May 152.968m  
May 07

East Lake



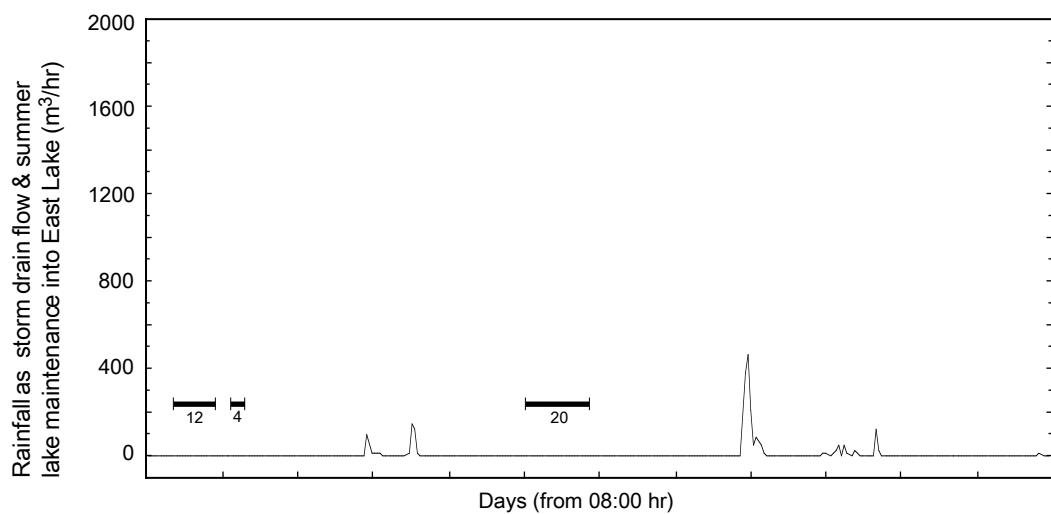
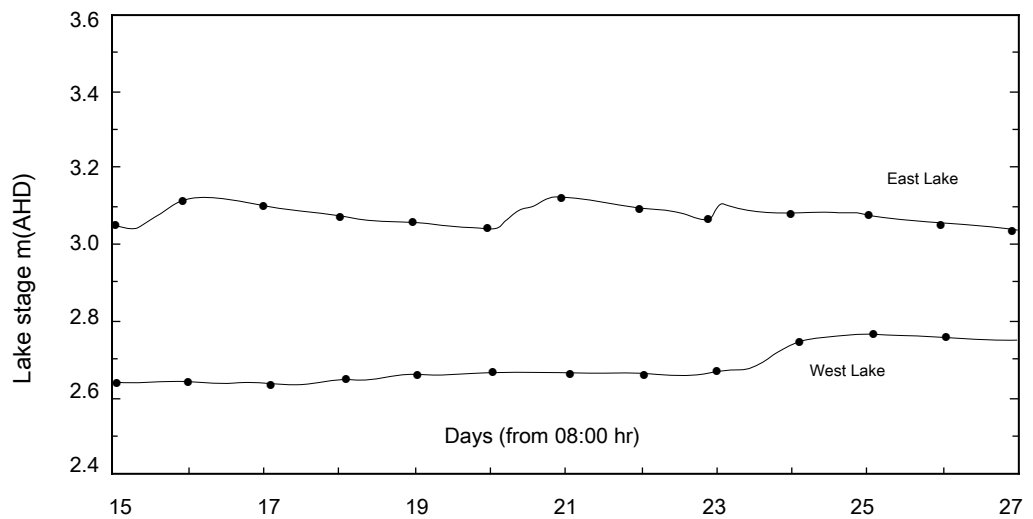
Minimum Stage

Maximum Stage

West Lake

2.764m  
May 253.123m  
May 212.633m  
May 173.032m  
May 27

East Lake



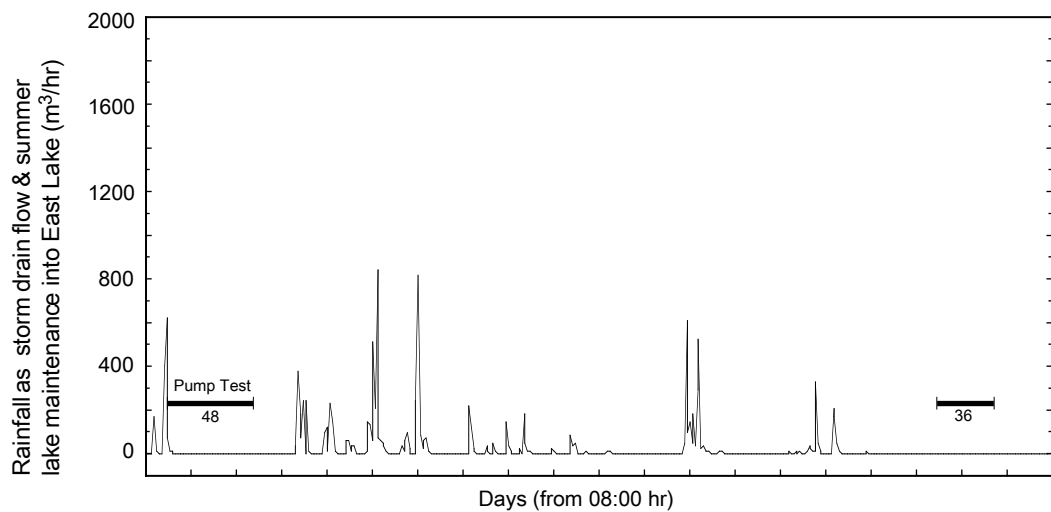
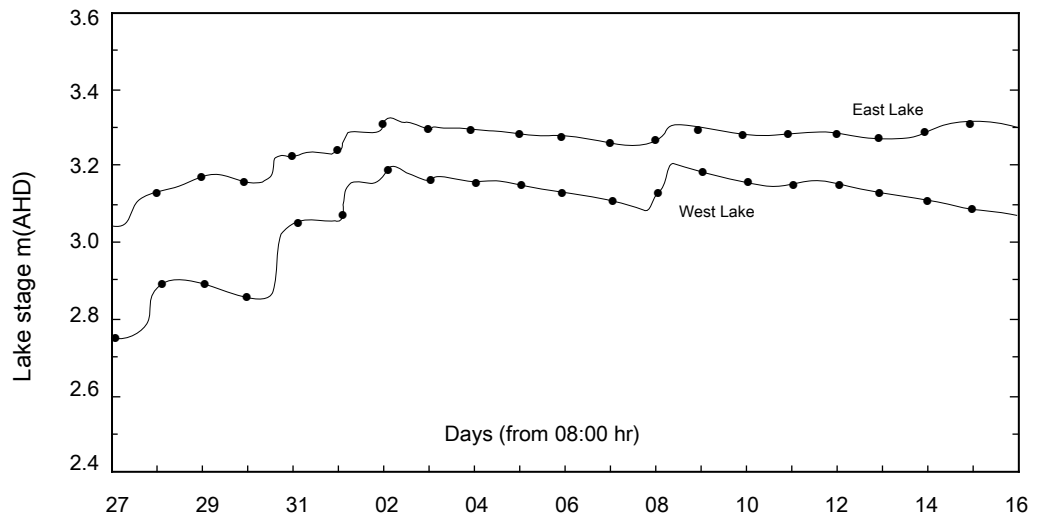
Minimum Stage

Maximum Stage

West Lake

3.187m  
June 023.312m  
June 022.750m  
May 273.030m  
May 27

East Lake



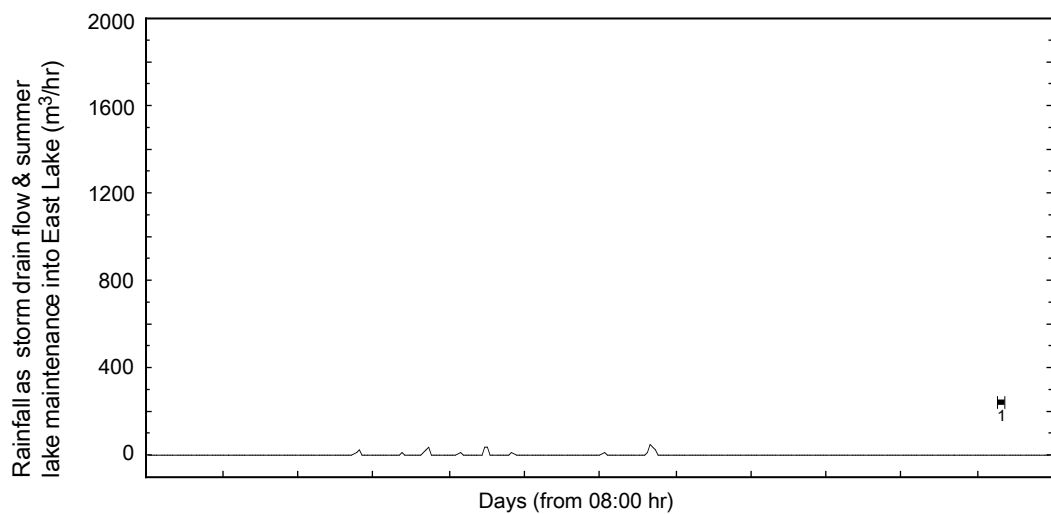
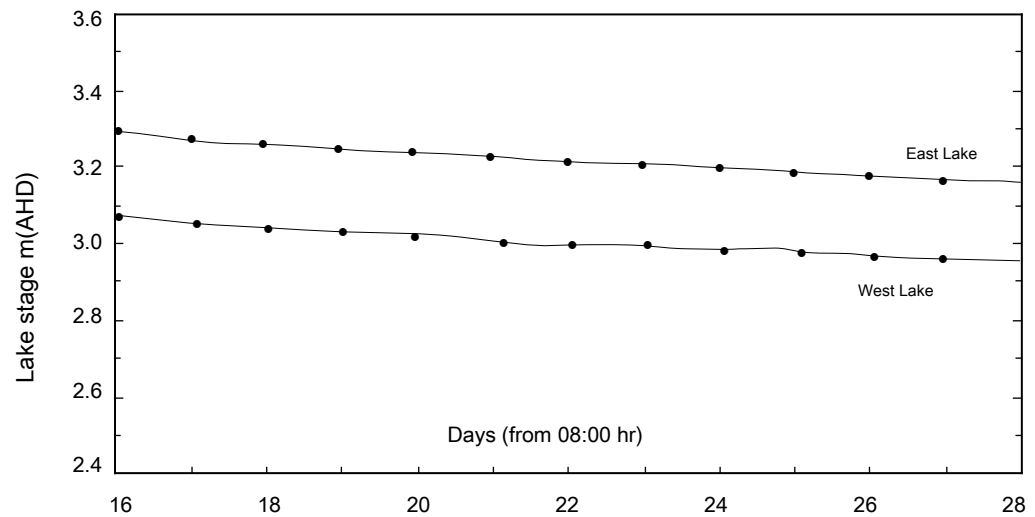
Minimum Stage

Maximum Stage

West Lake

3.068m  
June 163.290m  
June 162.948m  
June 283.155m  
June 28

East Lake



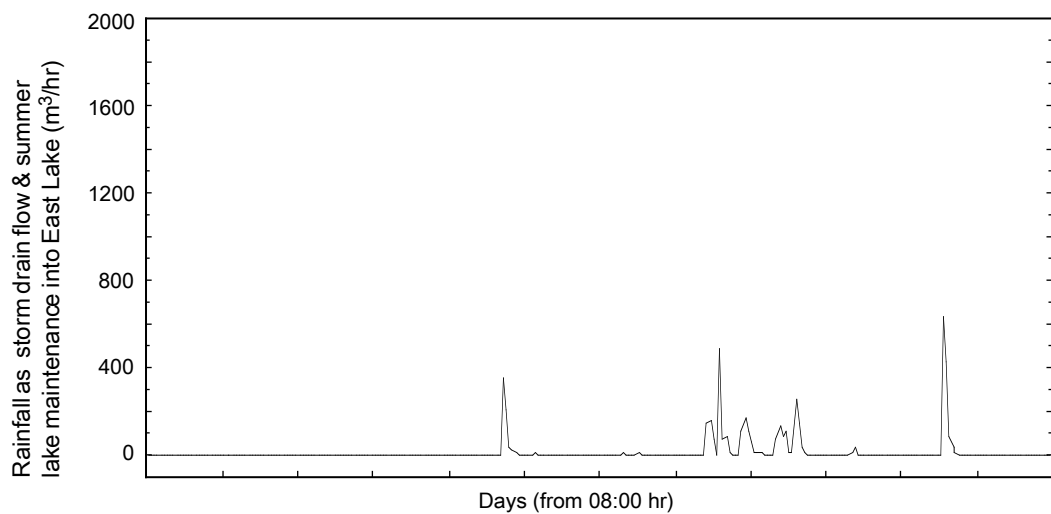
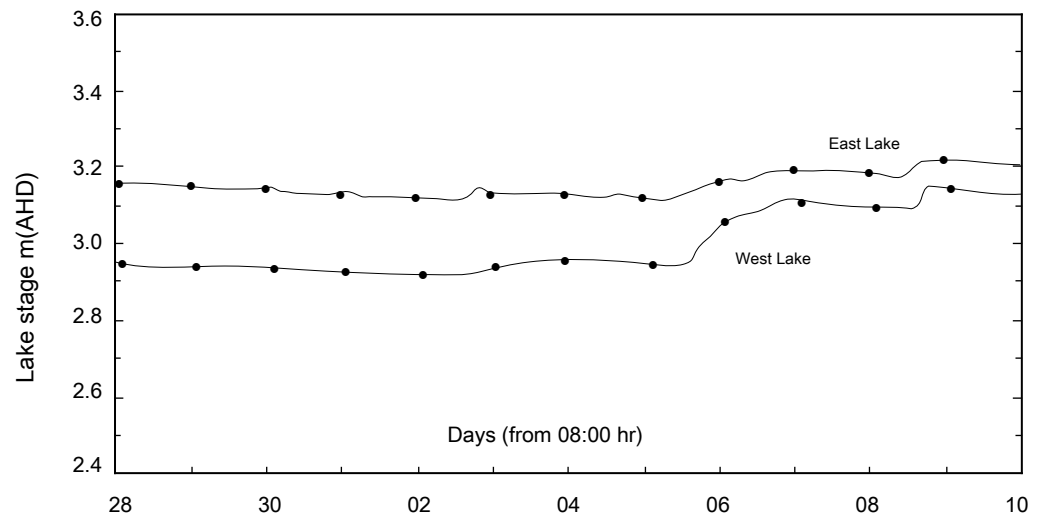
Minimum Stage

Maximum Stage

West Lake

3.138m  
July 093.215m  
July 092.918m  
July 023.108m  
July 02

East Lake





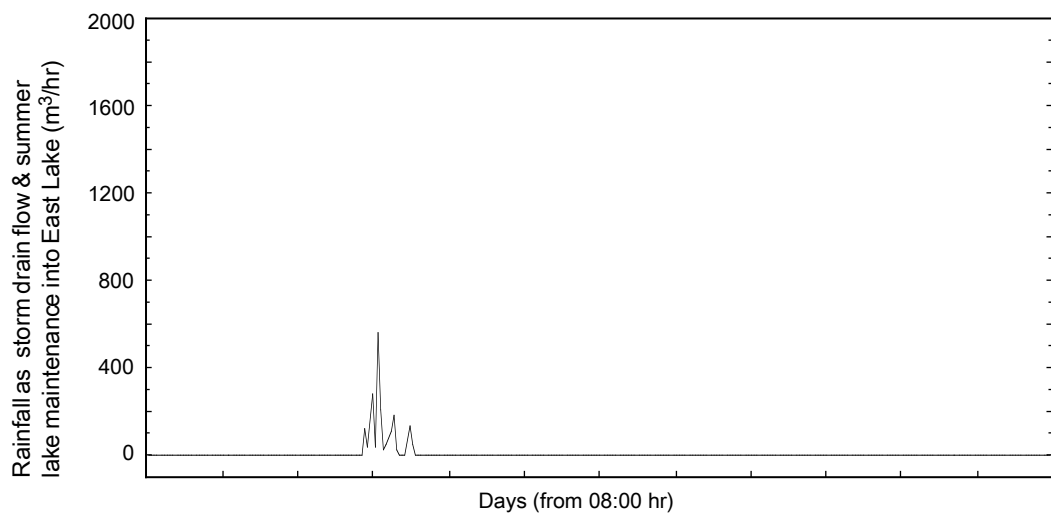
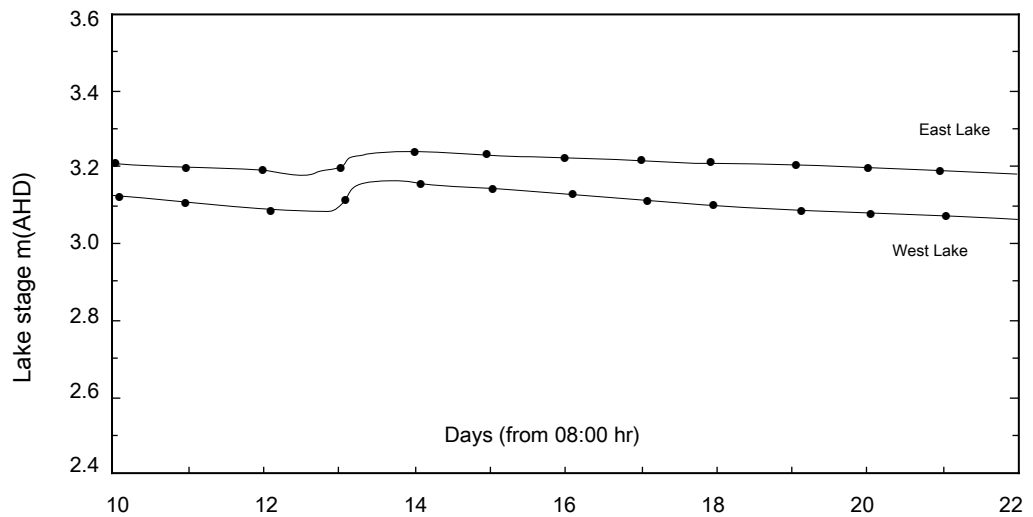
Minimum Stage

Maximum Stage

West Lake

3.157m  
July 143.241m  
July 143.059m  
July 223.183m  
July 12

East Lake



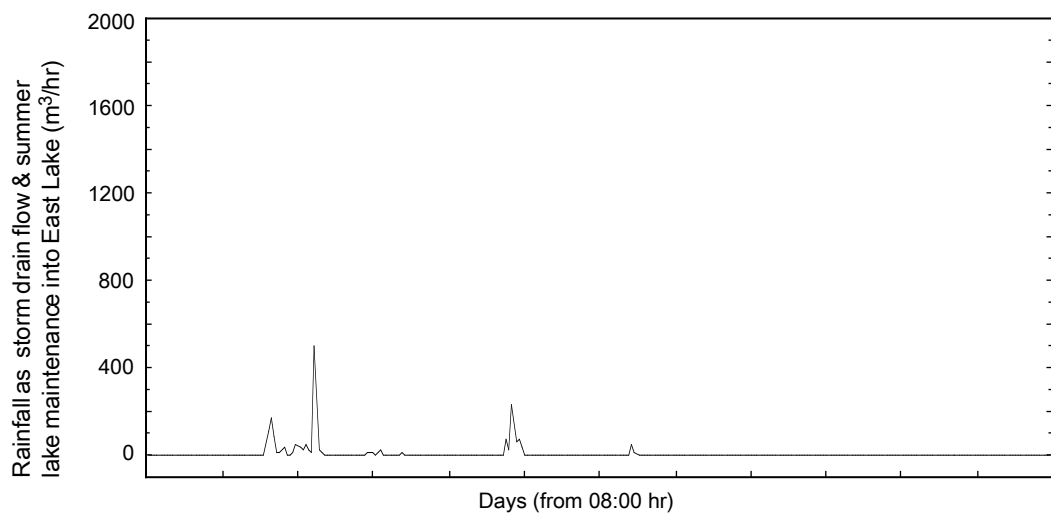
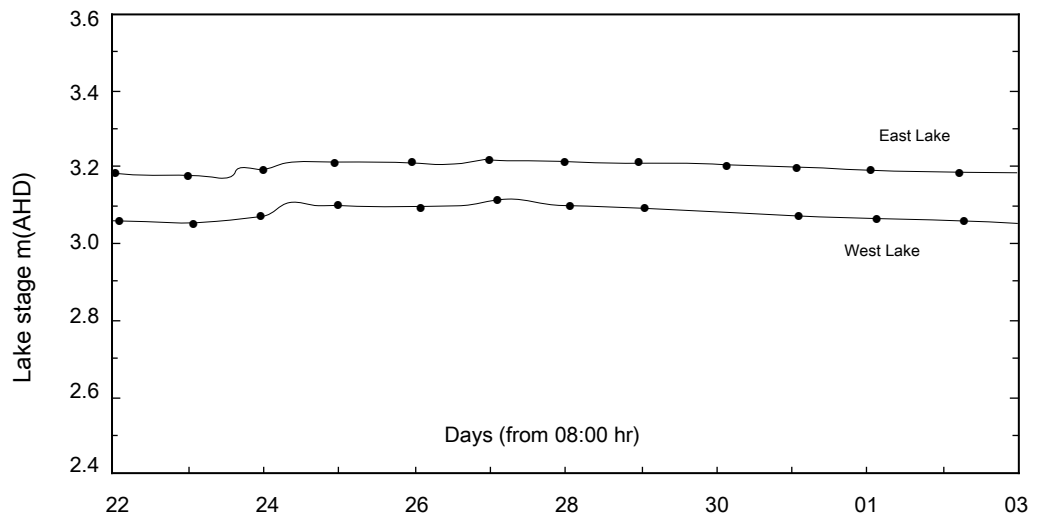
Minimum Stage

Maximum Stage

West Lake

3.109m  
July 273.217m  
July 273.051m  
July 233.170m  
July 23

East Lake



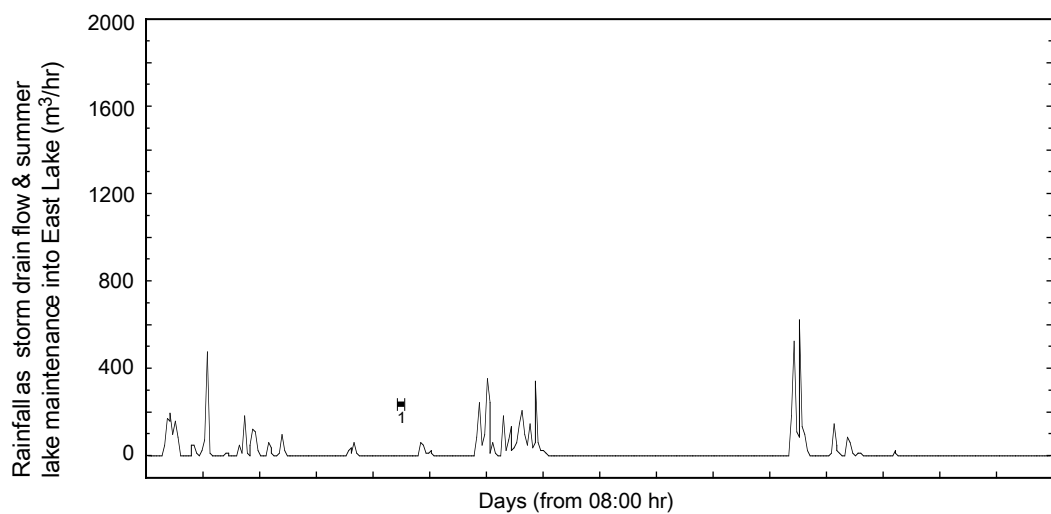
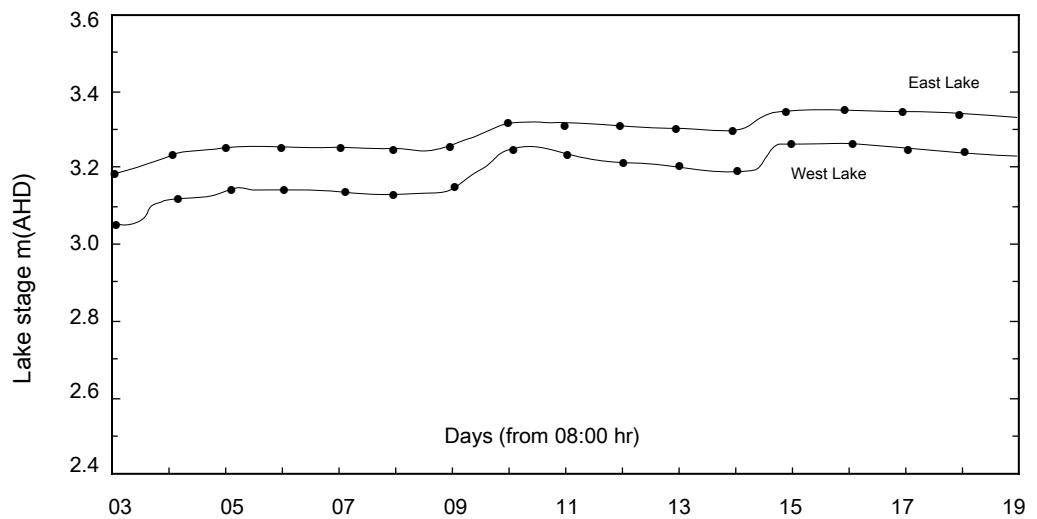
Minimum Stage

Maximum Stage

West Lake

3.261m  
August 163.351m  
August 163.052m  
August 033.175m  
August 03

East Lake



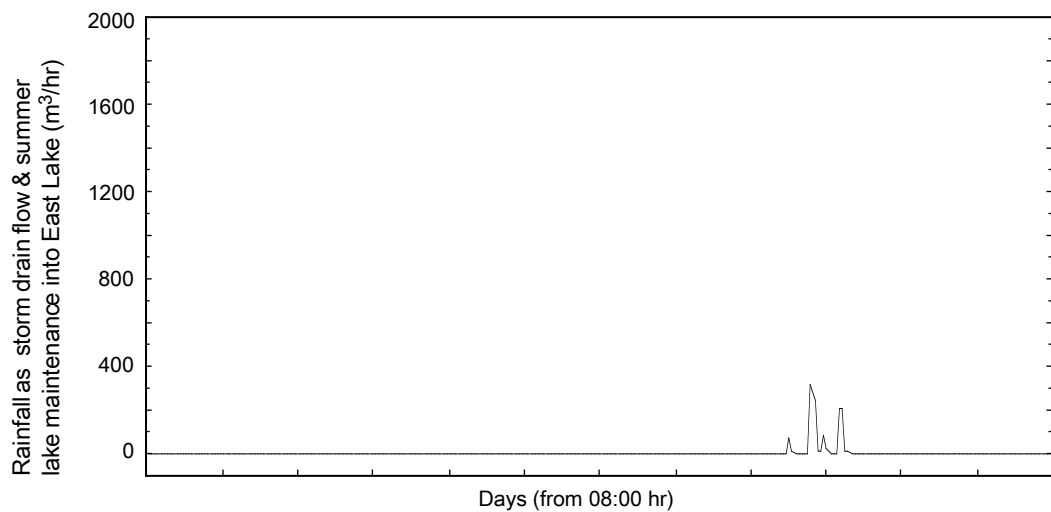
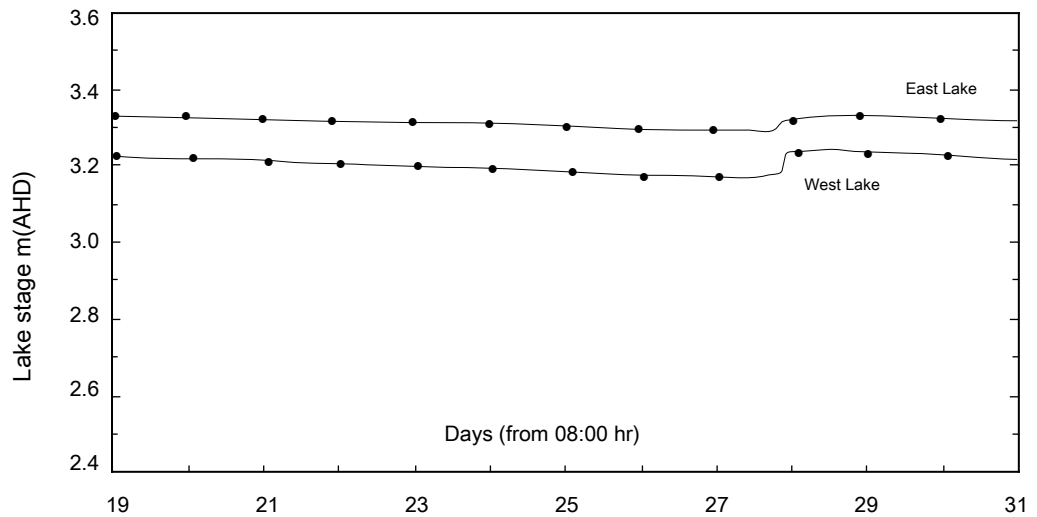
Minimum Stage

Maximum Stage

West Lake

3.234m  
August 293.332m  
August 283.166m  
August 273.289m  
August 27

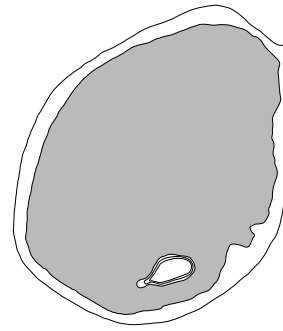
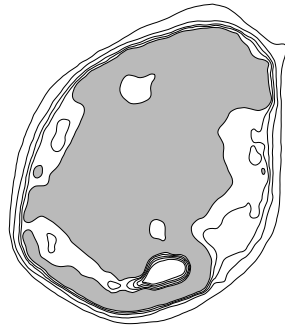
East Lake



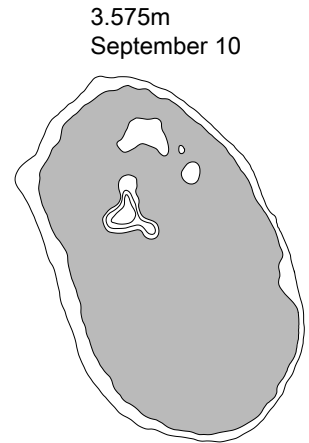
Minimum Stage

Maximum Stage

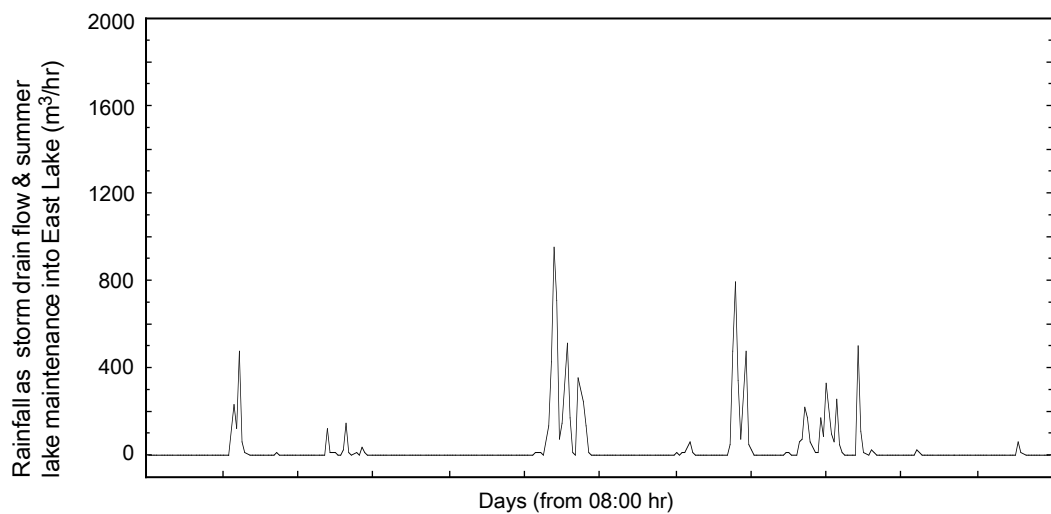
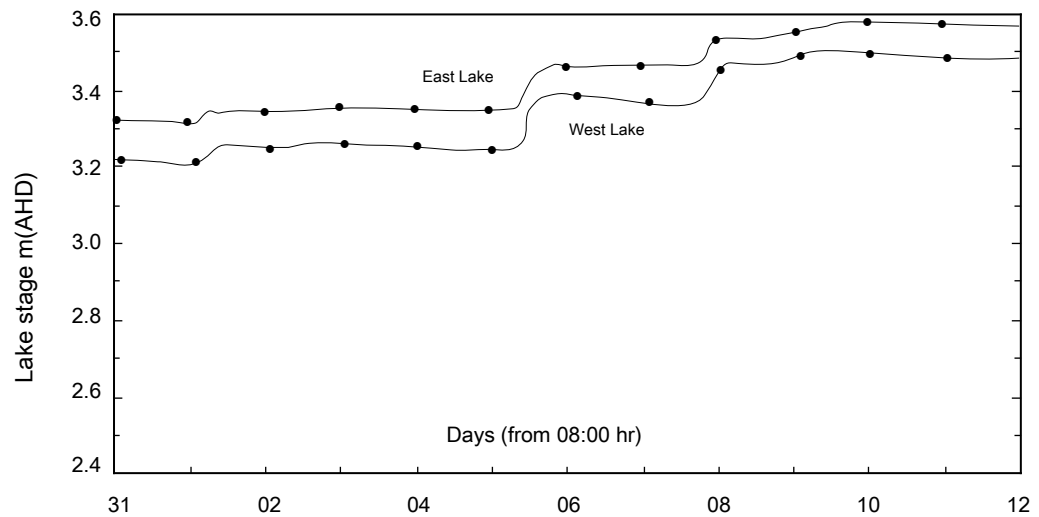
West Lake

3.315m  
August 31

East Lake



Deciduous leaf burst September 08

September 10 stages are peak  
values for winter 1997

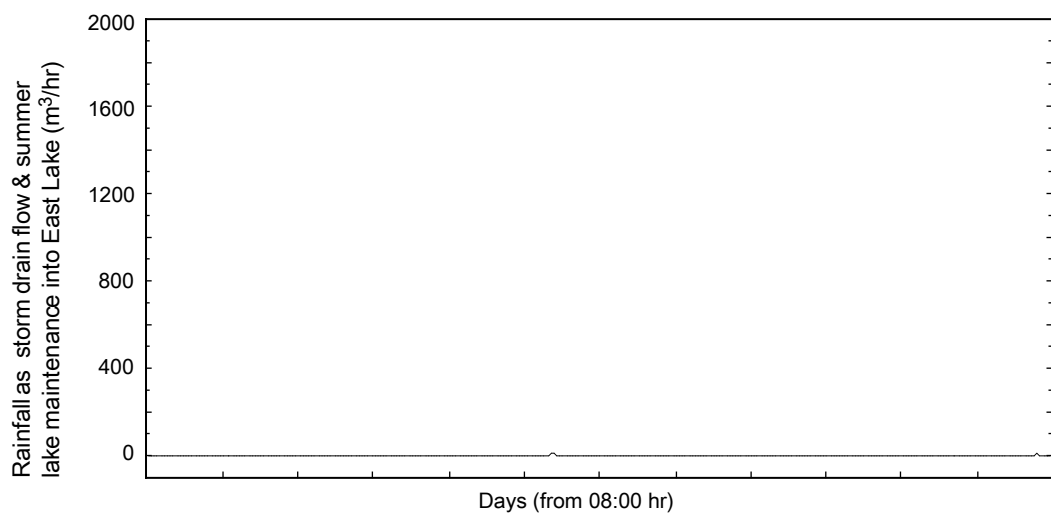
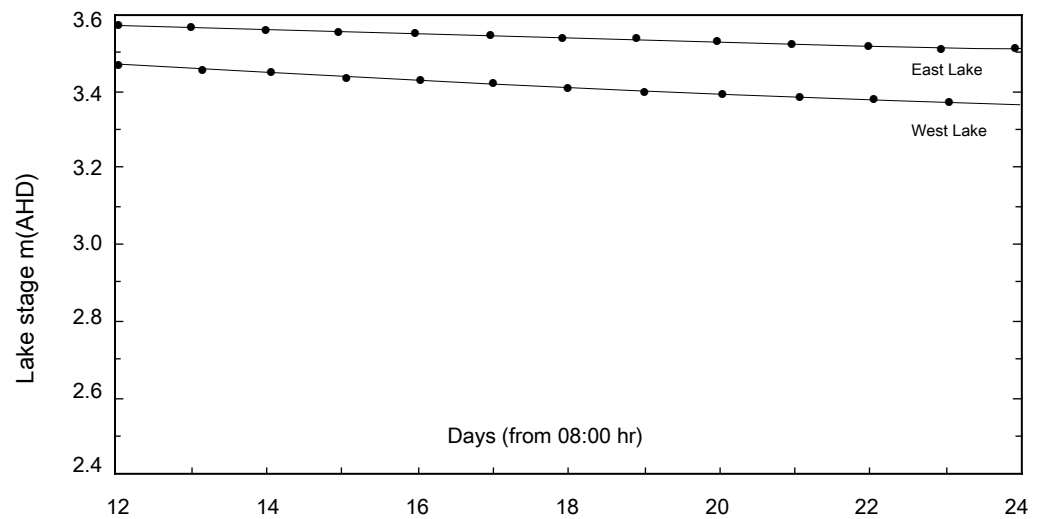
Minimum Stage

Maximum Stage

West Lake

3.467m  
September 123.567m  
September 123.360m  
September 243.504m  
September 24

East Lake



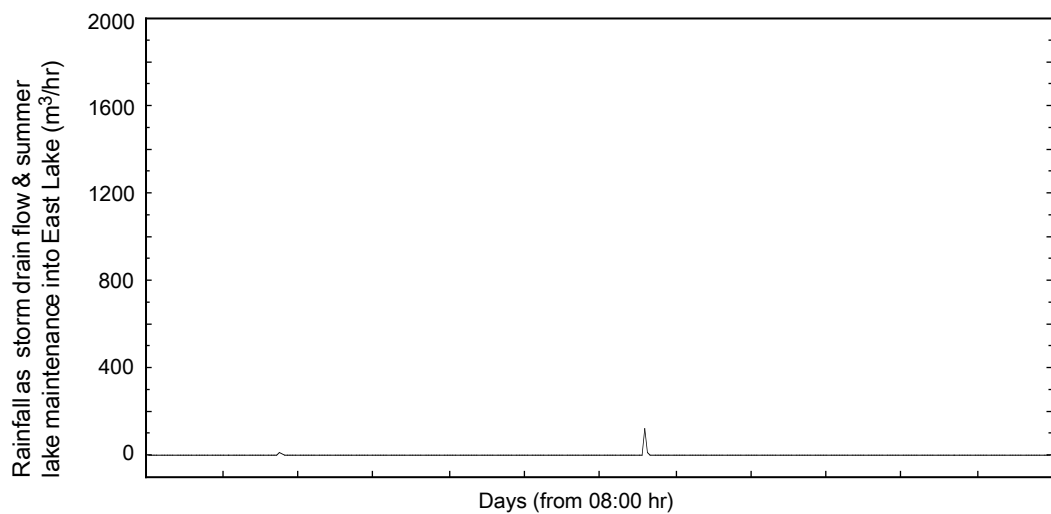
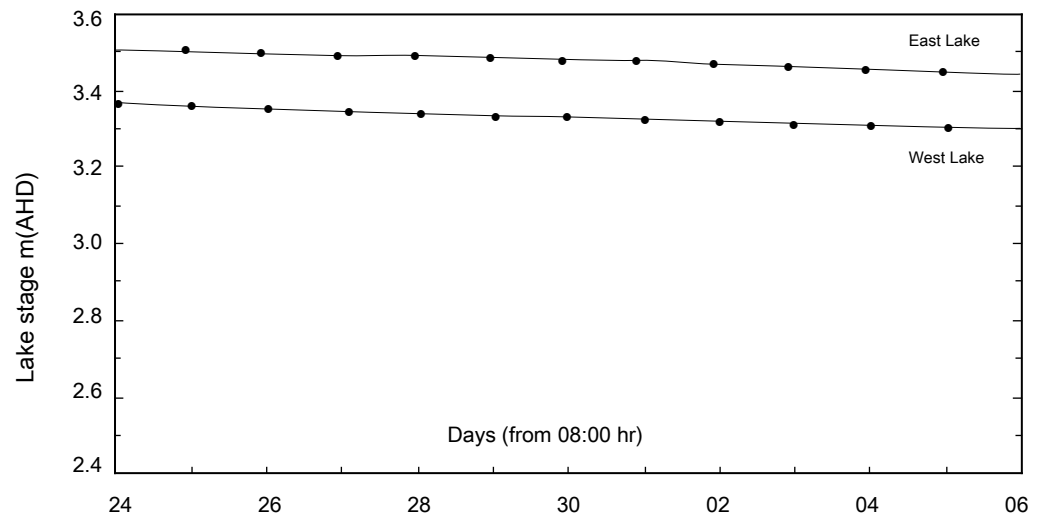
Minimum Stage

Maximum Stage

West Lake

3.360m  
September 243.504m  
September 243.290m  
October 063.442m  
October 06

East Lake



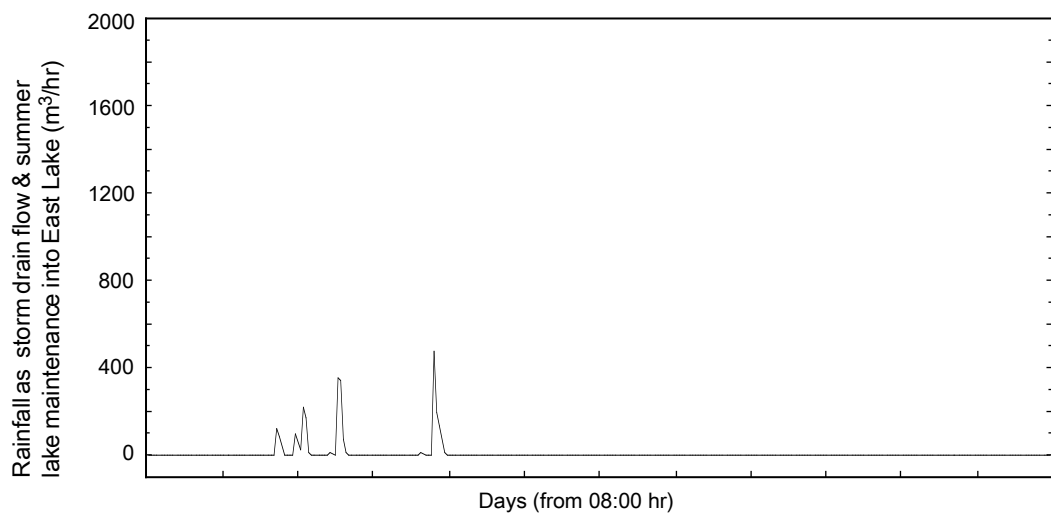
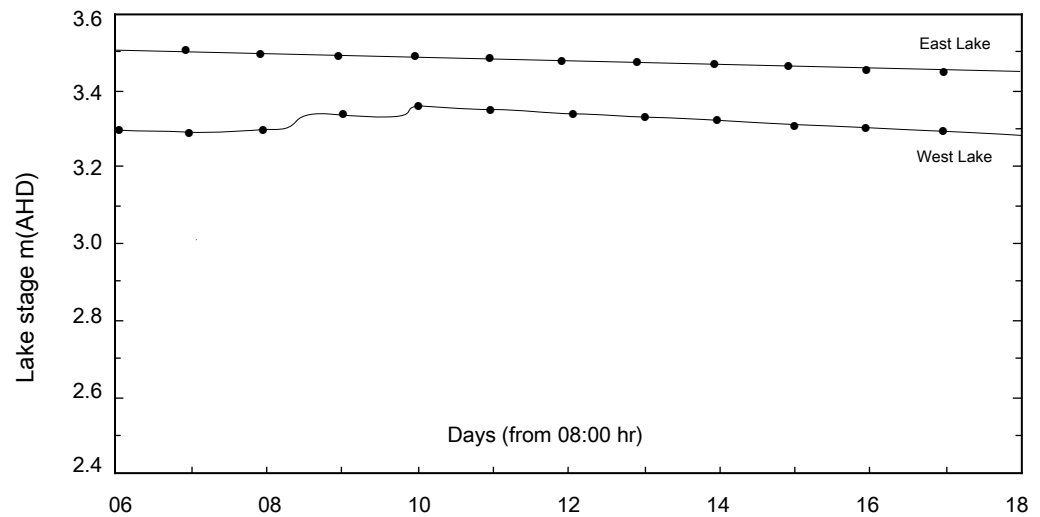
Minimum Stage

Maximum Stage

West Lake

3.357m  
October 103.497m  
October 103.285m  
October 073.425m  
October 18

East Lake

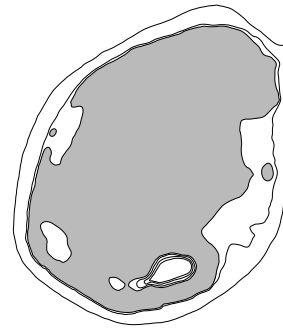
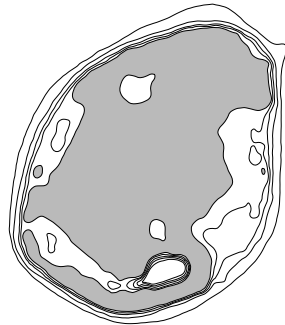
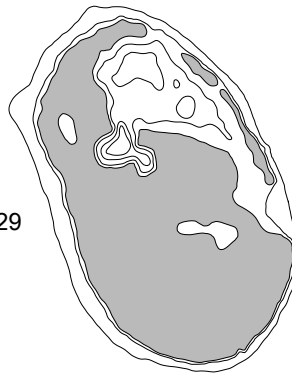




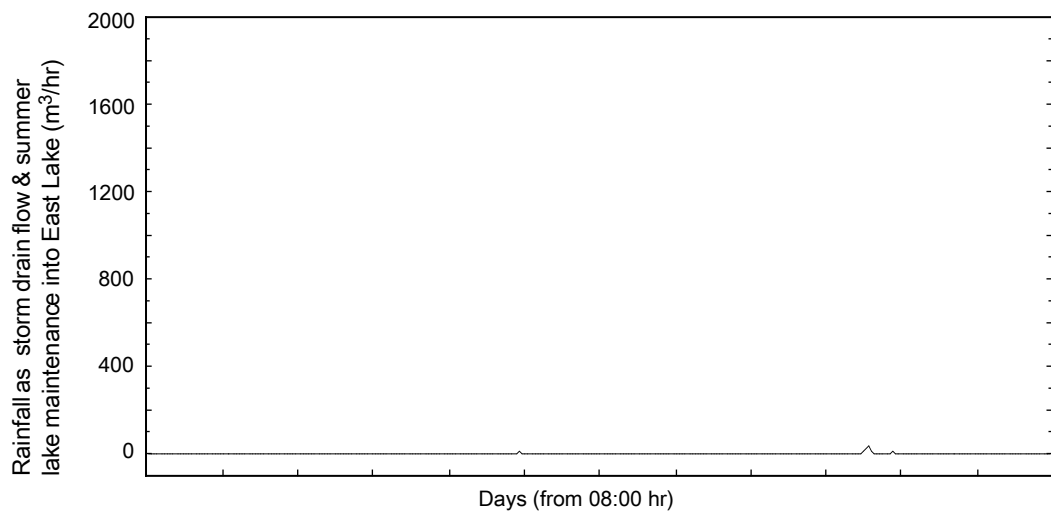
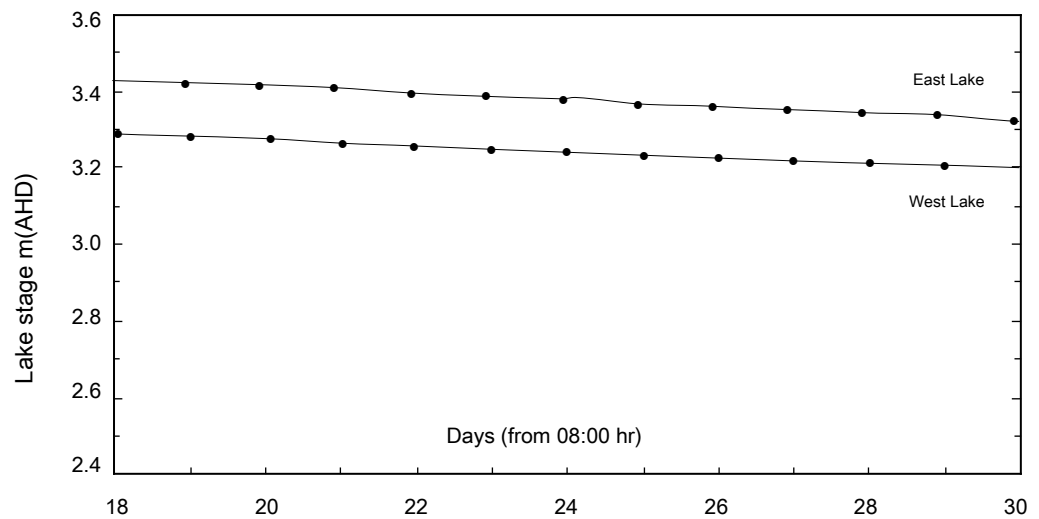
Minimum Stage

Maximum Stage

West Lake

3.426m  
October 183.317m  
October 29

East Lake



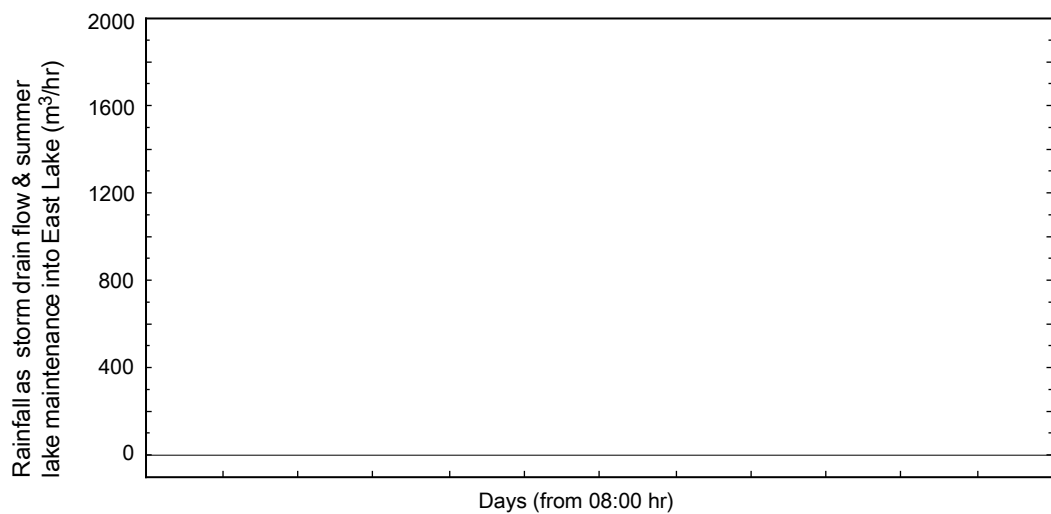
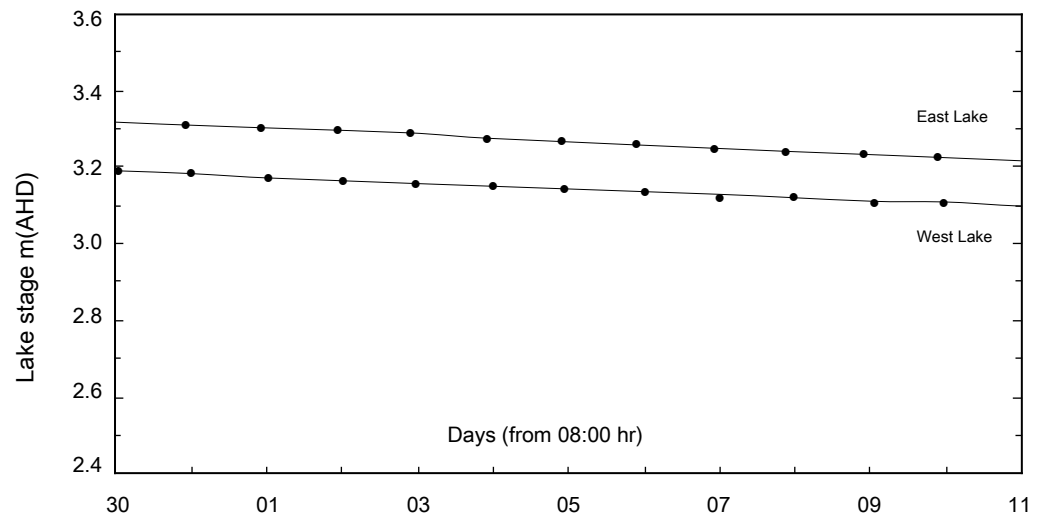
Minimum Stage

Maximum Stage

West Lake

3.188m  
October 303.317m  
October 303.095m  
November 113.203m  
November 11

East Lake



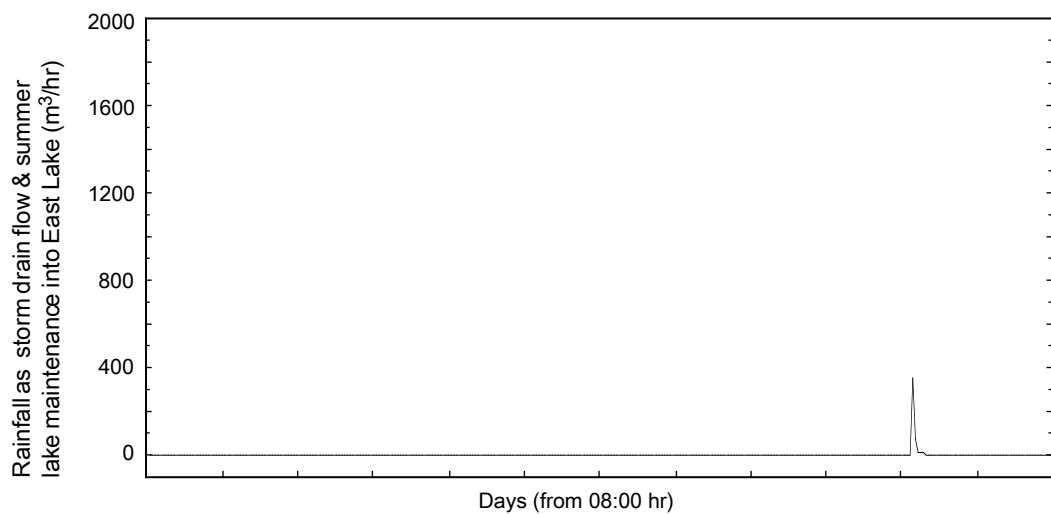
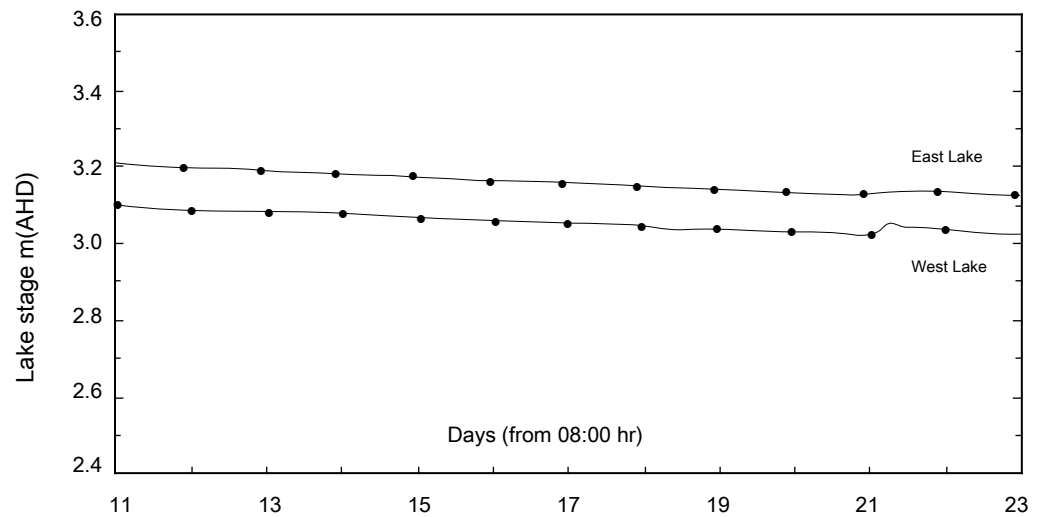
Minimum Stage

Maximum Stage

West Lake

3.095m  
November 113.209m  
November 113.019m  
November 213.116m  
November 21

East Lake



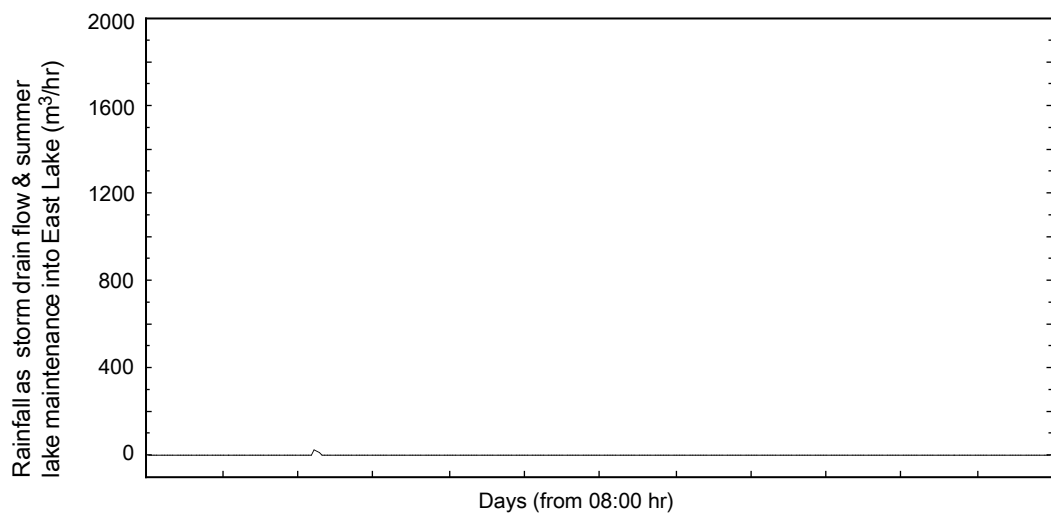
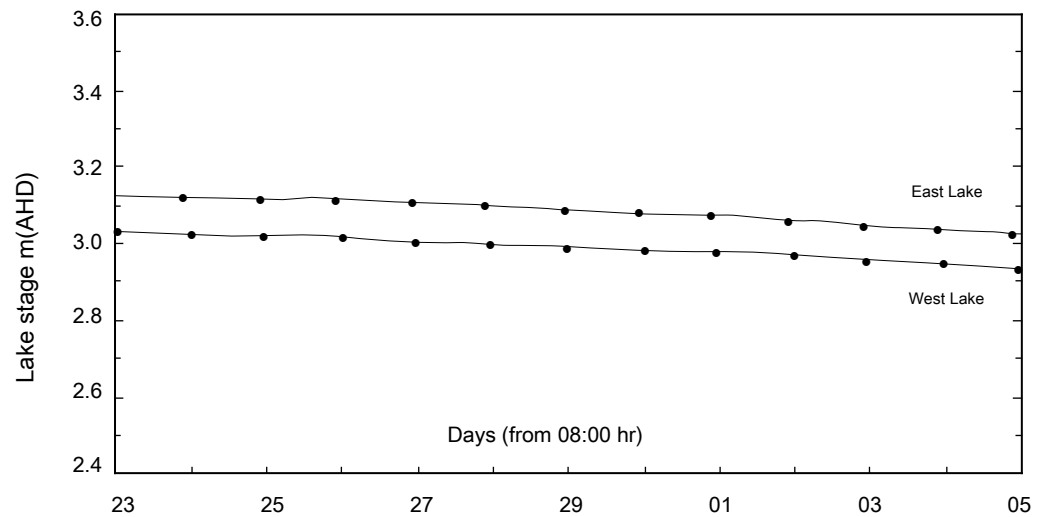
Minimum Stage

Maximum Stage

West Lake

3.030m  
November 233.126m  
November 232.934m  
December 053.021m  
December 05

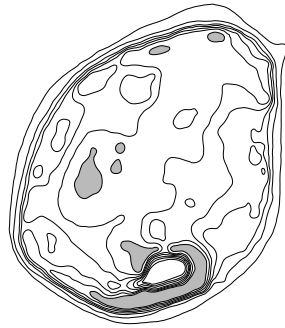
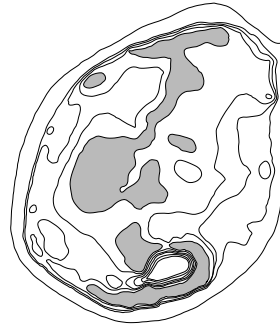
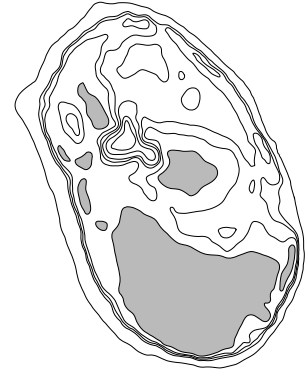
East Lake



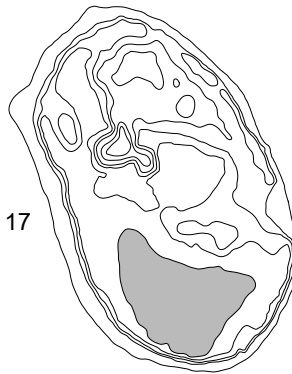
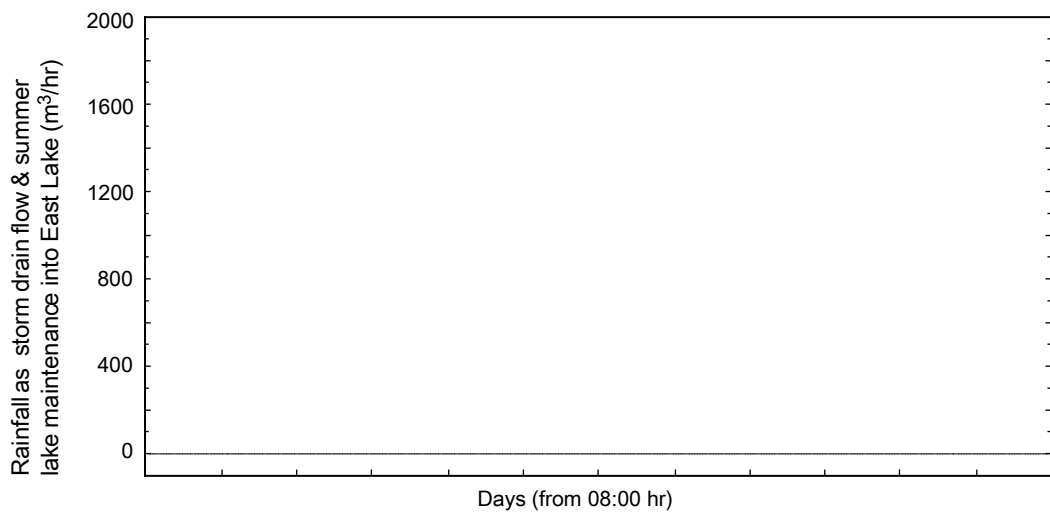
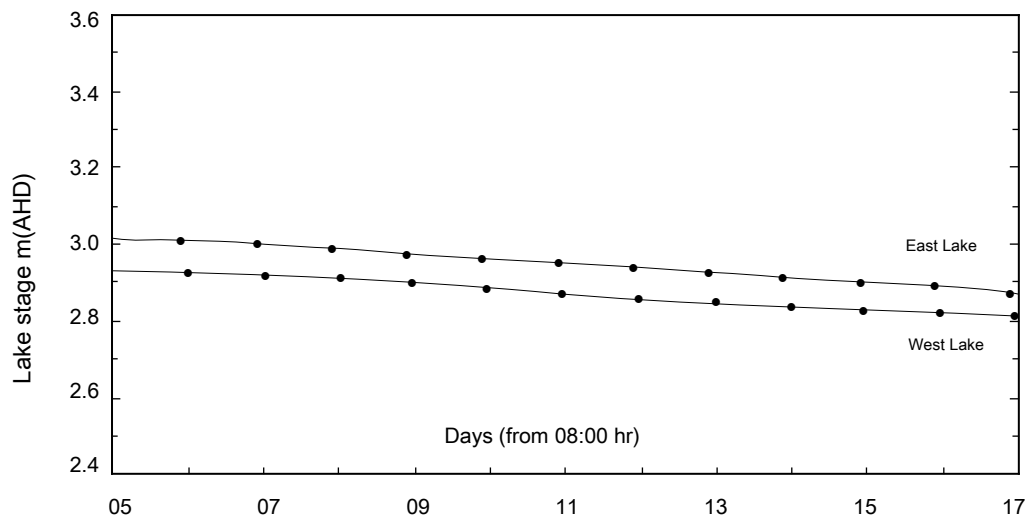
Minimum Stage

Maximum Stage

West Lake

2.809m  
December 172.934m  
December 053.027m  
December 05

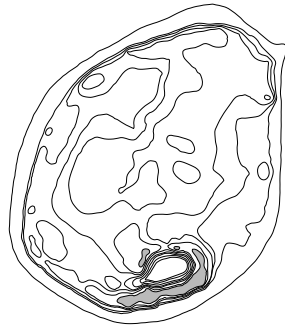
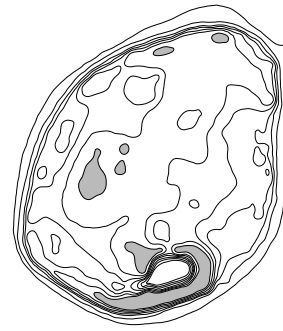
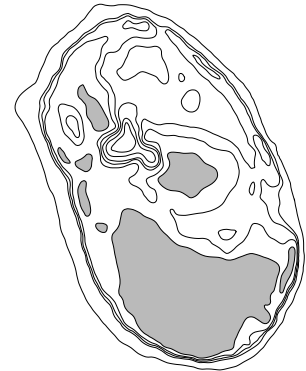
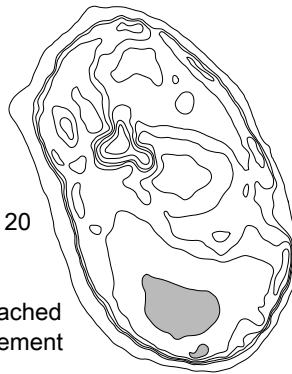
East Lake

2.867m  
December 17

Minimum Stage

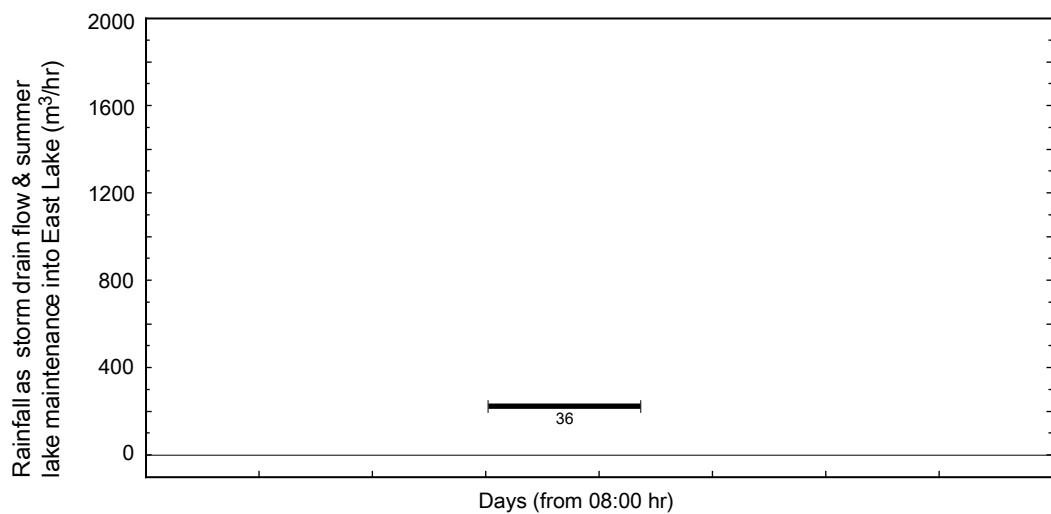
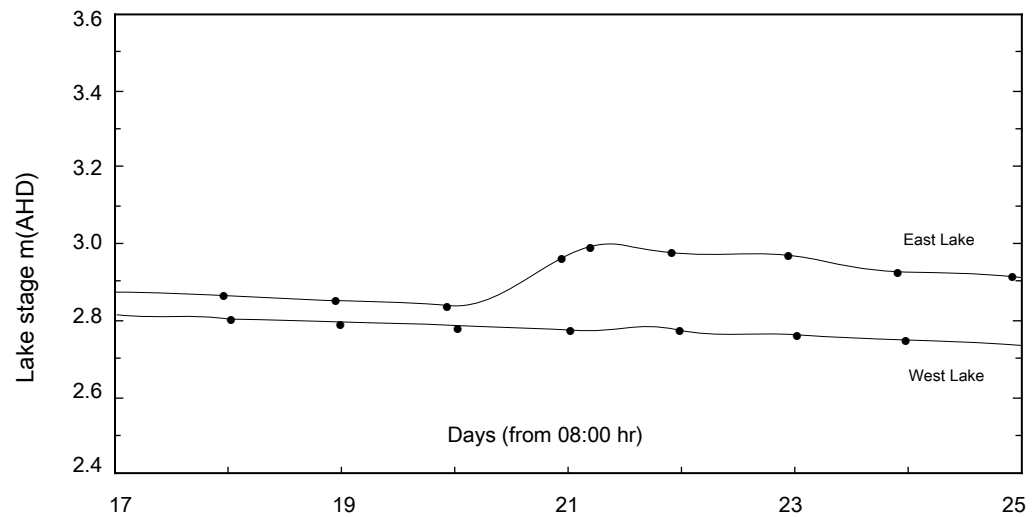
Maximum Stage

West Lake

2.735m  
December 172.809m  
December 252.982m  
December 212.829m  
December 20

East Lake

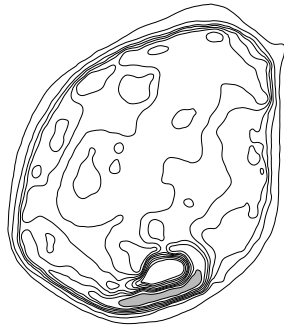
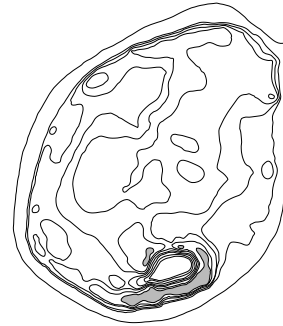
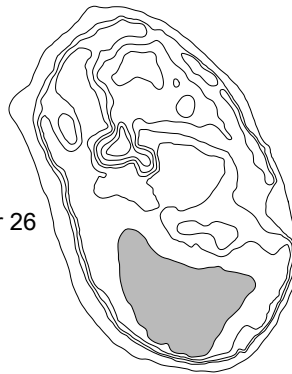
East Lake absolute minimum reached  
December 20 prior to commencement  
of lake maintenance pumping



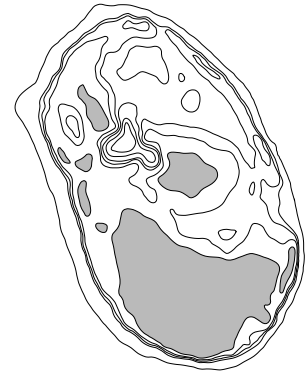
Minimum Stage

Maximum Stage

West Lake

2.682m  
January 032.735m  
December 252.870m  
December 26

East Lake

3.009m  
December 28